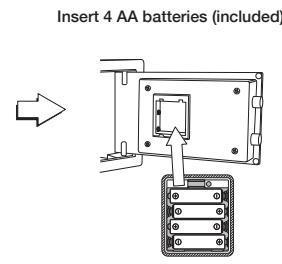
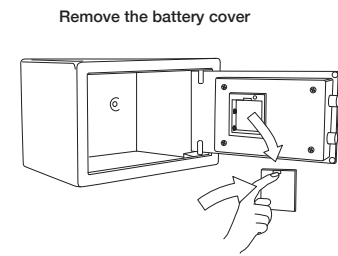
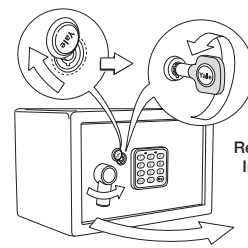
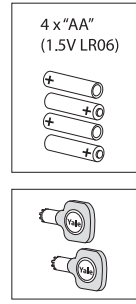


1

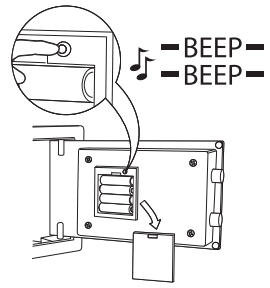
Install the Batteries



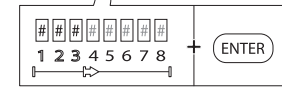
NB: Use key only for initial set up or changing batteries

2

Program Entry Code



On the keypad enter a 3 to 8 digit code. Press Enter button.

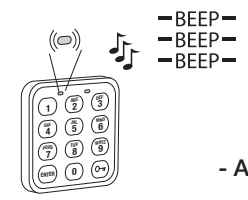
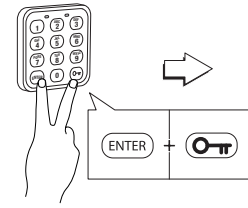
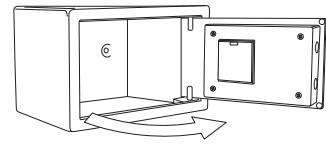


To reset pin code, press reset button on the inside of the safe. Then enter a new code.

3

Activating Alarm Tamper Function

With the safe open press ENTER and KEY buttons at the same time.



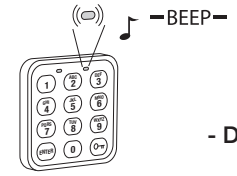
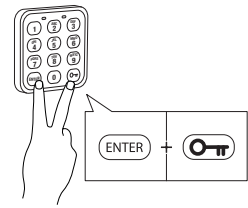
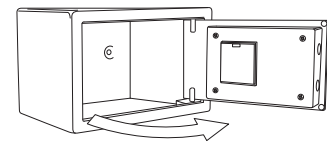
- ARMED -

Once the alarm is successfully turned on, you will hear three beeps.

4

De-activating Alarm Tamper Function

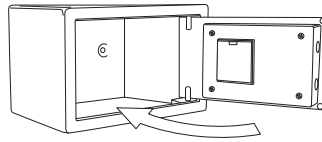
With the safe open press ENTER and KEY buttons at the same time.



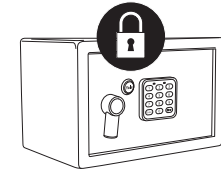
- DISARMED -

You will hear 1 beep once the alarm is turned off.

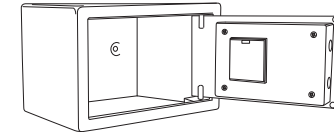
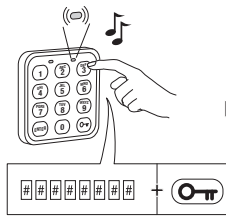
5 Locking the Safe



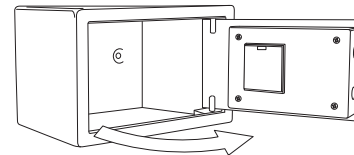
To lock the safe, close the safe door and turn the handle.



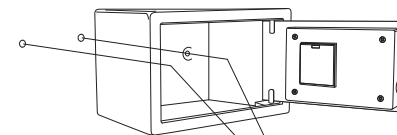
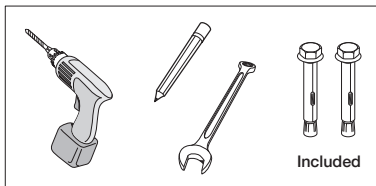
6 Unlocking the Safe



7 Low Battery Warning



8 Mounting the Safe (Optional)



Use the included hardware to mount the safe to a wall, shelf, or floor.

