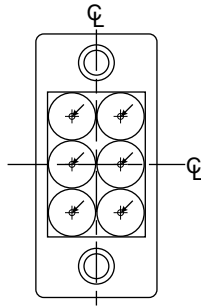


# Strike Template



## Template

**1 FOLD HERE**

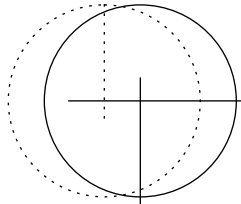
1-3/4" (45mm)  
THICK DOOR

**4 MARK**

**2-3/8" (60mm) BACKSET**

**5 DRILL**  
2-1/8" (54mm)  
HOLE

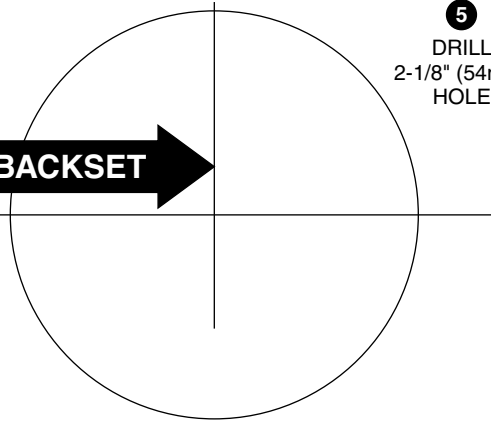
**2 MARK**  
PROPER  
DOOR  
THICKNESS



**3 DRILL 1" (25mm)**  
HOLE IN EDGE OF DOOR  
2" (51mm) DEEP

1-3/8" (35mm)  
THICK DOOR

NOTE:  
 TEMPLATE MUST  
 BE PLACED ON  
 LOW EDGE OF  
 DOOR BEVEL



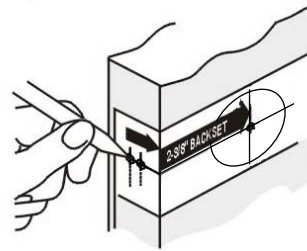
**CAUTION:**  
 If printed from  
 website print 1:1  
 scale. Measure  
 dimensions for  
 accuracy before use.

# 1

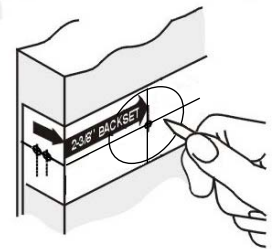
## Mark Door



Fold and apply template to low edge of door bevel and mark center of door edge as indicated on template at desired height from floor; approximately 36" - 40" (900mm - 1000mm).



Mark center hole on door face through guide on template.

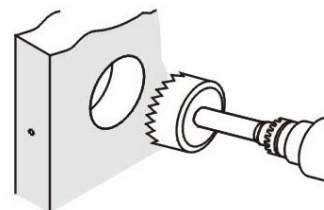


# 2

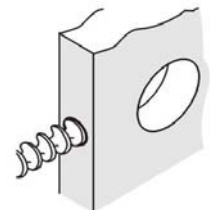
## Drill Holes



Drill 2-1/8" (54mm) hole about halfway through door face, then finish drilling from other side to prevent splintering.



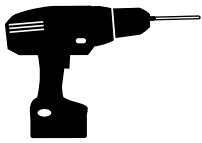
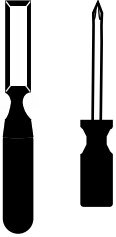
Drill 1" (25mm) hole in center of door edge through to 2-1/8" (54mm) hole for latch.



# 3

## Install Strike

For Privacy lock **ONLY**. There is no strike for Passage lock.



Mark location for strike plate hole in door jamb by closing door and pressing a common nail from inside 2-1/8" (54mm) hole through 1" (25mm) hole in door edge until nail makes indentation in jamb.

At indentation point, draw a vertical and horizontal centerline on jamb from mark.

NOTE: Make sure nail is held at true horizontal when pressing indentation so that latch center and strike center are aligned.

Place strike plate template on jamb, aligning centerlines with drawn centerlines on jamb.

Mark six (6) center points.

Bore 1/2" (13mm) holes 1-1/4" (32mm) deep at each center point marked.

Chisel away any excess wood to allow strike box to seat in jamb.

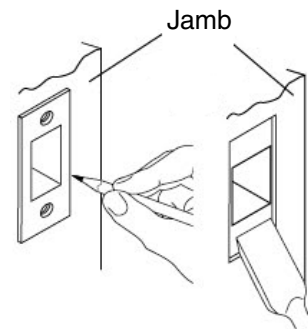
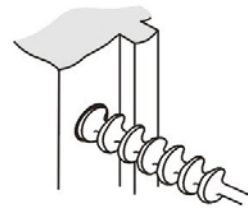
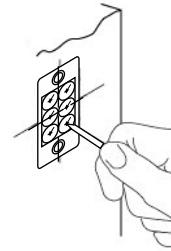
Place strike box in jamb.

Align strike over strike box and trace outline.

Chisel out area traced, deep enough to allow strike and strike box to install flush with jamb.

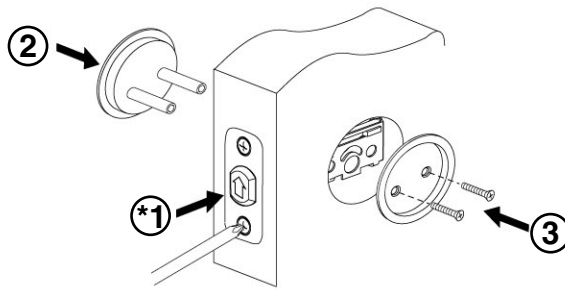
Place strike box and strike in jamb and mark screw hole centers.

Where marked, drill 3/32" (2.4mm) diameter pilot holes, 1" (25mm) deep.



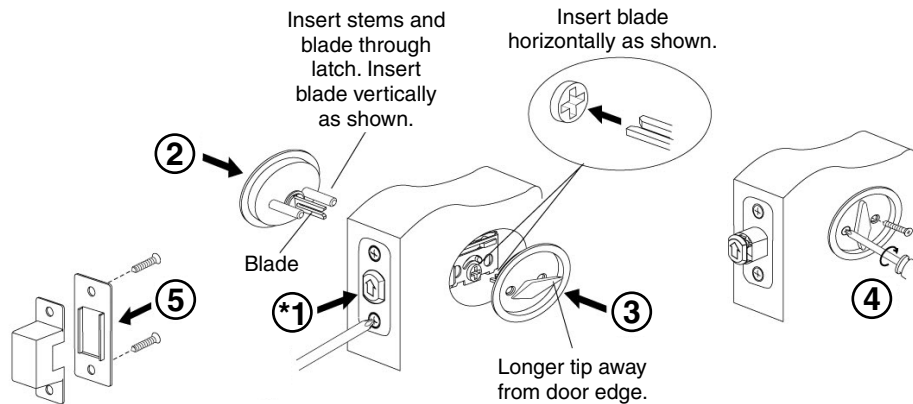
# 4

## Install Passage Function Lock



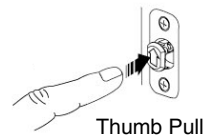
# 5

## Install Privacy Function Lock



\*Proper installation allows thumb pull to open from bottom, as shown.

To operate thumb pull, depress to extend, depress to retract. Keep thumb pull retracted after use.



## Yale Locks & Hardware

Product Support Tel 1-855-213-5841 • [www.yalehome.com](http://www.yalehome.com)

Yale® and Yale Edge Series® are registered trademarks of Assa Abloy Residential Group. Other products' brand names may be trademarks or registered trademarks of their respective owners and are mentioned for reference purposes only.

© Copyright 2018. All rights reserved. Reproduction in whole or in part without the express written permission of Assa Abloy Residential Group is prohibited.