



User Guide



Yale Luna Elite+

Yale Luna Elite-P

Yale Luna Elite-F

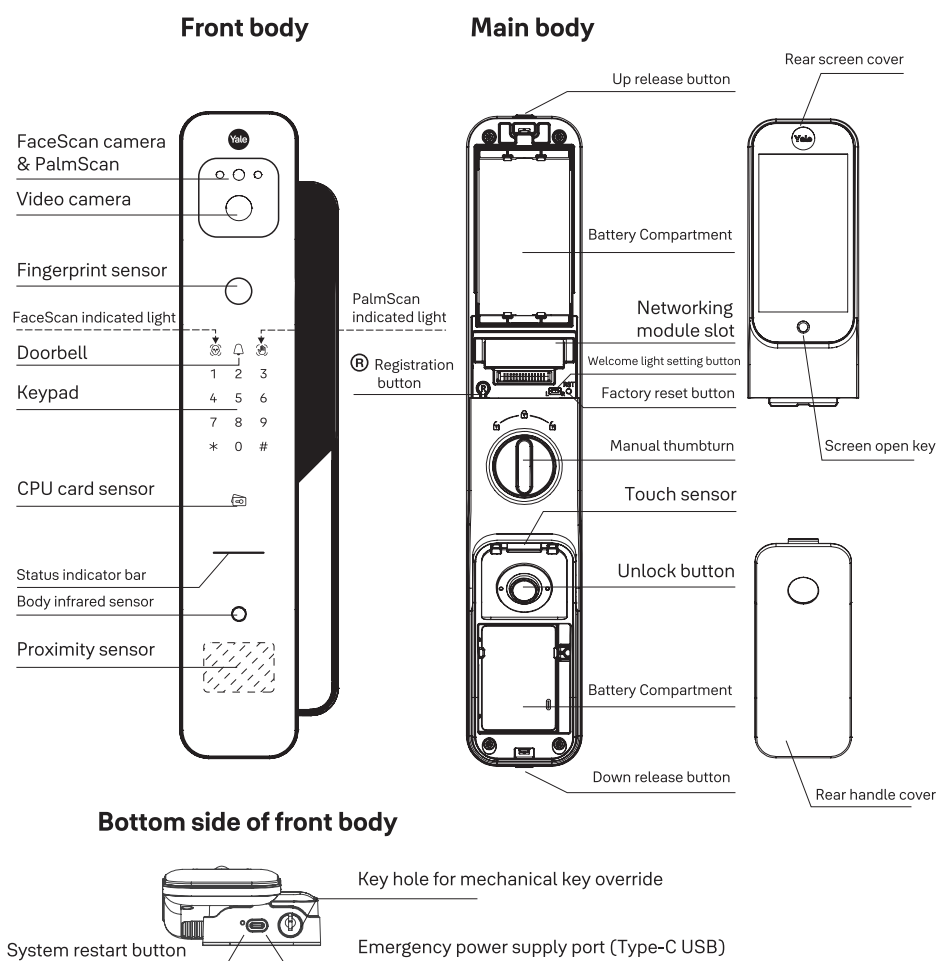
Table of contents

| | |
|---|----|
| 1. Preparation before installation | |
| 1.1 Product parts list | 01 |
| 1.2 Indicator light description | 02 |
| 1.3 Icon description | 02 |
| 2. Operation settings | |
| 2.1 Administrator and user ID | 03 |
| 2.2 Factory default administrator code | 03 |
| 2.3 Changing of administrator code | 03 |
| 2.4 Factory reset | 04 |
| 3. Add / Delete user | |
| 3.1 Add / delete PIN code user | 05 |
| 3.2 Add / delete fingerprint user | 05 |
| 3.3 Add / delete CPU card user | 06 |
| 3.4 Add / delete FaceScan user | 06 |
| 3.5 Add / delete PalmScan user | 07 |
| 3.6 Delete all users for all credentials | 07 |
| 4. System settings | |
| 4.1 Auto-lock setting | 08 |
| 4.2 Volume setting | 08 |
| 4.3 Doorbell | 08 |
| 4.4 Language setting | 08 |
| 4.5 External forced lock setting | 08 |
| 5. Usage of product | |
| 5.1 PIN code and CPU card, fingerprint scan,FaceScan,PalmScan | 09 |
| 5.2 Mechanical key override | 10 |
| 5.3 Silent mode operation | 10 |
| 5.4 Unlocking from indoor | 10 |
| 5.5 External forced lock | 10 |
| 5.6 Door locking | 11 |
| 5.7 Internal forced lock | 11 |
| 5.8 Emergency power supply | 11 |
| 5.9 Battery replacement | 12 |
| 5.10 System restart | 13 |
| 5.11 Power-saving Mode | 13 |
| 6. Protection and alarm | |
| 6.1 Low battery alarm | 14 |
| 6.2 Tampering alarm | 14 |
| 6.3 3-mins lock-out | 14 |
| 6.4 Intrusion alarm | 14 |
| 6.5 External forced lock alarm | 14 |
| 7. Important notes | 15 |
| 8. Networking modules (optional accessories) | 16 |

* The pictures in this installation manual are for illustration purpose only;
actual product or parts may vary. *

Product Introduction

1.1 Product parts list

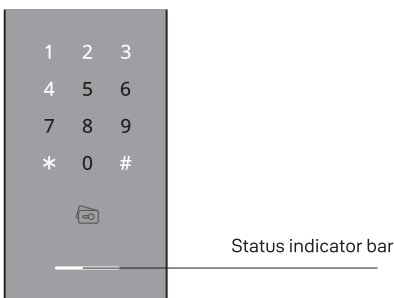


! Notes

- Proximity Sensor area: There should be no obstructions near the distance sensor, as this may affect the functionality of face recognition and palm vein recognition.
- FaceScan indicated light: The light turns white when detection is initiated and red when detection fails.
- PalmScan indicated light: The light turns white when detection is initiated and red when detection fails.

1.2 Indicator light description

The indicator lights will flash when the corresponding keys are pressed;
Under menu operation, only the numbers with lights on are active



1.2.1 Status Indicator bar description

- Red: Operation error and low battery.
- Green: The door is opened successfully.
- Blue: Internal forced lock is activated successfully

1.3 Icon description

| | |
|--|-------------------------------|
| | Touch the keypad with palm |
| | Press * button on the keypad |
| | Press # button on the keypad |
| | Press R (registration) button |
| | FaceScan (Face recognition) |
| | User fingerprint scan |
| | Enter PIN code |
| | CPU card scan |
| | PalmScan |

Operation setting

2.1 Administrator and user ID

| | |
|----------------------|--|
| Administrator code | Administrator code is required for all menu operations. Chines Mode: 6-10digits / English Mode:4-10digits |
| User code (2 digits) | System generates user ID automatically during registration of face, fingerprint, PIN and card for addressing purpose; (fingerprint user ID from 01~50; face, PIN and card user ID from 00~99 each) |

2.2 Factory default administrator password

Default administrator code: 1 2 3 4 5 6 7 8 9 0

Notes

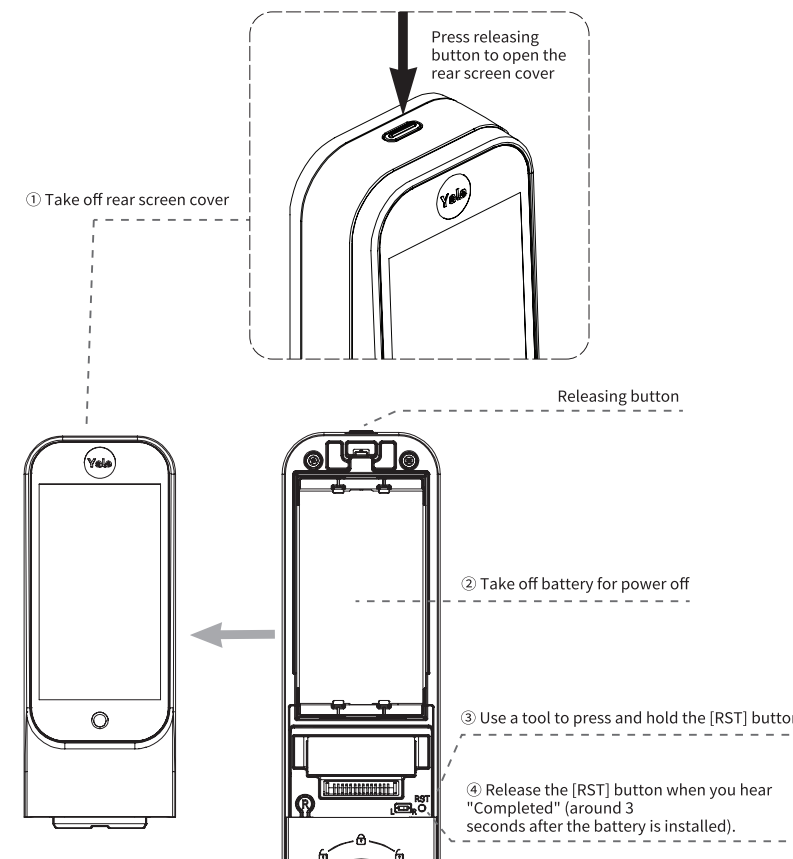
- For optimum security, please change the administrator code before using the product,
- Administrator code is required for all menu operations.

2.3 Changing of administrator code

Only one administrator code can be set and the administrator code is required for user management and various function settings.

| Step | 1 | 2 | 3 | 4 | 5 | 6 | 7 | 8 | 9 | 10 |
|--------------------------------|--------------------|---|---|---|-------------------------|---|-------------------------|---|--------|----|
| Changing of administrator code | Administrator code | Ⓜ | 1 | # | 1 2 3 4 5 6 7 8 9 | # | 1 2 3 4 5 6 7 8 9 | # | ✱ or Ⓜ | |
| | | | | | new administrator code | | new administrator code | | | |

2.4 Factory reset



1. Press and push upward to remove the battery cover
2. Remove the battery from the battery compartment.
3. Use a tool to press and hold the [RST] button until the completion of step 5.
4. Reinstall the battery.
5. Release the [RST] button when you hear "Completed" (around 3 seconds after the battery is installed). Factory reset is completed now.

Add / delete user

For all menu setting operations,
Press (*) button, to return to previous page.
Press (R) button, to complete registration.


3.1 Add / delete PIN code user

| Step | 1 | 2 | 3 | 4 | 5 | 6 | 7 | 8 | 9 | 10 | 11 | 12 | 13 |
|----------------------|---------------------|-----|---|---|---|---|---------|---|-------------------------|----|----|----|----------------|
| Add PIN code user | Admin-istrator code | (R) | 2 | # | 1 | # | User ID | # | 1 2 3 4 5 6 7 8 9 | # | | | * or (R) |
| Step | 1 | 2 | 3 | 4 | 5 | 6 | 7 | 8 | 9 | 10 | 11 | 12 | 13 |
| Delete PIN code user | Admin-istrator code | (R) | 2 | # | 3 | # | User ID | # | | | | | * or (R) |

! Notes

- Maximum PIN code user: 100 users (ID range from 00-99)
- Please ensure user IDs assigned are recorded. The user ID is required for the deletion of the respective PIN code user.

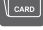
3.2 Add / delete fingerprint user

| Step | 1 | 2 | 3 | 4 | 5 | 6 | 7 | 8 | 9 | 10 | 11 | 12 | 13 |
|--------------------------|---------------------|-----|---|---|---|---|---|---|---------|----|--|----|----------------|
| Add finger-print user | Admin-istrator code | (R) | 3 | # | 1 | # | 1 | # | User ID | # |  Voice guide | | * or (R) |
| Step | 1 | 2 | 3 | 4 | 5 | 6 | 7 | 8 | 9 | 10 | 11 | 12 | 13 |
| delete finger-print user | Admin-istrator code | (R) | 3 | # | 1 | # | 3 | # | User ID | # | | | * or (R) |

! Notes

- Maximum fingerprint user: 50 users (user ID range from 01-50)
- Please ensure user IDs assigned are recorded. The user ID is required for the deletion of the respective fingerprint user.
- Please follow the voice-guided instruction to scan the fingerprint accordingly (8 times)


3.3 Add / delete CPU card

| Step | 1 | 2 | 3 | 4 | 5 | 6 | 7 | 8 | 9 | 10 | 11 | 12 | 13 |
|-----------------|---------------------|-----|---|---|---|---|---|---|---------|----|---|----|----------------|
| Add CPU card | Admin-istrator code | (R) | 3 | # | 2 | # | 1 | # | User ID | # |  | | * or (R) |
| Step | 1 | 2 | 3 | 4 | 5 | 6 | 7 | 8 | 9 | 10 | 11 | 12 | 13 |
| Delete CPU card | Admin-istrator code | (R) | 3 | # | 2 | # | 3 | # | User ID | # | | | * or (R) |

! Notes

- Maximum CPU card: 100 cards (ID range from 00-99)
- Please ensure user IDs assigned are recorded. The user ID is required for the deletion of the respective CPU card user.

3.4 Add / delete FaceScan user

| Step | 1 | 2 | 3 | 4 | 5 | 6 | 7 | 8 | 9 | 10 | 11 | 12 | 13 |
|----------------------|---------------------|-----|---|---|---|---|---|---|---------|----|---|----|----------------|
| Add FaceScan user | Admin-istrator code | (R) | 3 | # | 3 | # | 1 | # | User ID | # |  | | * or (R) |
| Step | 1 | 2 | 3 | 4 | 5 | 6 | 7 | 8 | 9 | 10 | 11 | 12 | 13 |
| Delete FaceScan user | Admin-istrator code | (R) | 3 | # | 3 | # | 3 | # | User ID | # | | | * or (R) |

! Notes

- Maximum FaceScan user : 100 users (user ID range from 00-99)
- Please ensure user IDs assigned are recorded. The user ID is required for the deletion of the respective FaceScan user.
- FaceScan feature, add and delete of FaceScan user will be deactivated when low battery alarm is triggered.

System settings

3.5 Add / delete PalmScan user

| Step | 1 | 2 | 3 | 4 | 5 | 6 | 7 | 8 | 9 | 10 | 11 | 12 | 13 |
|----------------------|---------------------|---|---|---|---|---|---|---|---------|----|----|----|--------|
| Add PalmScan user | Admin-istrator code | Ⓡ | 3 | # | 4 | # | 1 | # | User ID | # | | | * or Ⓡ |
| Step | 1 | 2 | 3 | 4 | 5 | 6 | 7 | 8 | 9 | 10 | 11 | 12 | 13 |
| Delete PalmScan user | Admin-istrator code | Ⓡ | 3 | # | 4 | # | 3 | # | User ID | # | | | * or Ⓡ |

⚠ 注意

- PalmScan Capacity: Up to 100 can be added (ID range: 00-99).
- Please remember the user ID number, as it is required to delete the corresponding palm scan data.
- Low Battery Alert: When a low battery warning is prompted, the device enters power-saving mode. In this mode, palm scan function, registration, and deletion functions will be disabled.

3.6 Delete all users for all credentials

| Step | 1 | 2 | 3 | 4 | 5 | 6 | 7 | 8 | 9 | 10 | 11 | 12 | 13 |
|------------|---------------------|---|---|---|---------------------|---|---|---|---|----|----|----|--------|
| Delete all | Admin-istrator code | Ⓡ | 5 | # | Admin-istrator code | # | | | | | | | * or Ⓡ |

4.1 Auto-lock setting

| Step | 1 | 2 | 3 | 4 | 5 | 6 | 7 | 8 | 9 | 10 | 11 | 12 |
|------------|---------------------|---|---|---|---|---|---|---|---|----|----|--------|
| Activate | Admin-istrator code | Ⓡ | 6 | # | 2 | # | 1 | # | | | | * or Ⓡ |
| Deactivate | Admin-istrator code | Ⓡ | 6 | # | 2 | # | 3 | # | | | | * or Ⓡ |

4.2 Volume setting

| Step | 1 | 2 | 3 | 4 | 5 | 6 | 7 | 8 | 9 | 10 | 11 | 12 |
|-------------|---------------------|---|---|---|---|---|---|---|---|----|----|--------|
| High volume | Admin-istrator code | Ⓡ | 6 | # | 3 | # | 1 | # | | | | * or Ⓡ |
| Low volume | Admin-istrator code | Ⓡ | 6 | # | 3 | # | 2 | # | | | | * or Ⓡ |
| Mute | Admin-istrator code | Ⓡ | 6 | # | 3 | # | 3 | # | | | | * or Ⓡ |

4.3 Doorbell setting

| Step | 1 | 2 | 3 | 4 | 5 | 6 | 7 | 8 | 9 | 10 | 11 |
|------------------|---------------------|---|---|---|---|---|--------------------------|---|---|----|--------|
| Doorbell setting | Admin-istrator code | Ⓡ | 6 | # | 4 | # | (01~20) Input bell no | # | | | * or Ⓡ |

4.4 Language setting

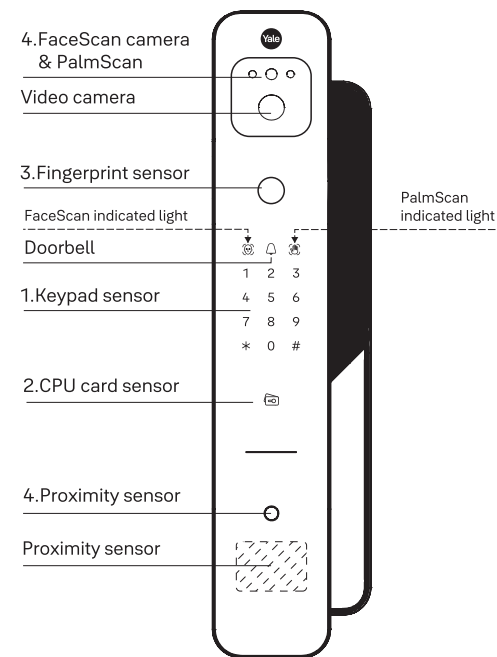
| Step | 1 | 2 | 3 | 4 | 5 | 6 | 7 | 8 | 9 | 10 | 11 |
|------------------|---------------------|---|---|---|---|---|--------------|---|---|----|--------|
| Language setting | Admin-istrator code | Ⓡ | 6 | # | 5 | # | 2 Chinese | # | | | * or Ⓡ |
| | Admin-istrator code | Ⓡ | 6 | # | 5 | # | 3 English | # | | | * or Ⓡ |

4.5 External forced lock setting

| Step | 1 | 2 | 3 | 4 | 5 | 6 | 7 | 8 | 9 | 10 | 11 | 12 |
|---------|---------------------|---|---|---|---|---|---|---|---|----|----|--------|
| Setting | Admin-istrator code | Ⓡ | 6 | # | 6 | # | 1 | # | | | | * or Ⓡ |
| Remove | Admin-istrator code | Ⓡ | 6 | # | 6 | # | 3 | # | | | | * or Ⓡ |

Usage of product

5.1 PIN code and CPU card, fingerprint scan, FaceScan, PalmScan



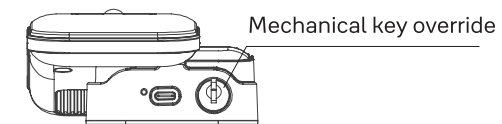
1. Palm touch the keypad to activate for keypad input. Enter PIN code and press (*) to confirm.
2. Touch the registered CPU card on the CPU card sensor.
3. Finger touch the fingerprint sensor.
4. Stand in front of the FaceScan camera within a distance of 0.4m-1.0m with face facing towards the FaceScan camera until hearing the music voice notification.
5. Place the registered palm 9-20cm away from the palmar vein module until the voice prompts you to open the door.

Notes

- FaceScan feature, add and delete of FaceScan user will be deactivated when low battery alarm is triggered.
- Scramble code: Fake password can be added either at the front or the back of the administrator or user code to minimize the leakage of the actual password.
Example: (1238888*****)+(*) or (*****8888123)+(*)

5.2 Mechanical key override

In the event of an emergency, such as forgetting password, running out of battery or other unexpected circumstances, the mechanical key override can be used as back up to unlock the product.



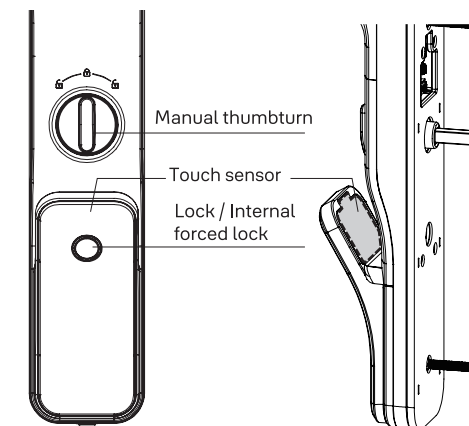
5.3 Silent mode operation

Activate silent mode to unlock the product silently (voice notification muted)



5.4 Unlocking from indoor

1. Short press "unlock" button with hand touch on the touch sensor, then push/pull to exit.
2. During emergency, use manual thumbturn to unlock and exit.



5.5 External forced lock

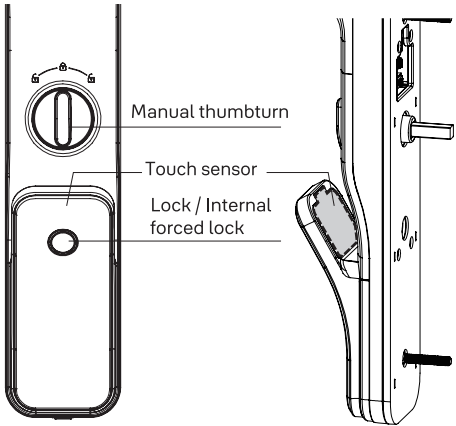
1. To use the external forced lock function, you need to enter the menu to enable it.
2. After enabling the external forced lock setting, press and hold the number 0 on the keypad within 3 seconds after the door is closed and locked. The system will prompt "External forced lock alarm activated" indicating that the external forced lock function is activated.
3. An alarm will be triggered if the door is opened from indoor.

5.6 Door locking

- 1. The deadbolt will be locked automatically upon the door being closed (with "auto-lock" feature activated)
- 2. Short press "lock / internal forced lock" button from inside and the deadbolt will be locked

5.7 Internal forced lock

- 1. To activate internal forced lock function, press and hold the Internal Forced Lock button for 3 seconds
- 2. To deactivate internal forced lock function, press and hold the Internal Forced Lock button for 3 seconds.
- 3. Press unlock button and touchpad sensor, or turn the manual thumbturn can release the internal forced lock.

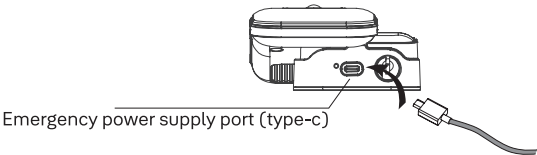


⚠ Notes

- Internal forced lock can only be deactivated by administrator code, press and hold "internal forced lock" button for 3s, and manual thumb turn.
- Credentials like FaceScan, fingerprint, CPU card, user PIN code, and one-time-pin (OTP) are deactivated once the internal forced lock function is activated.

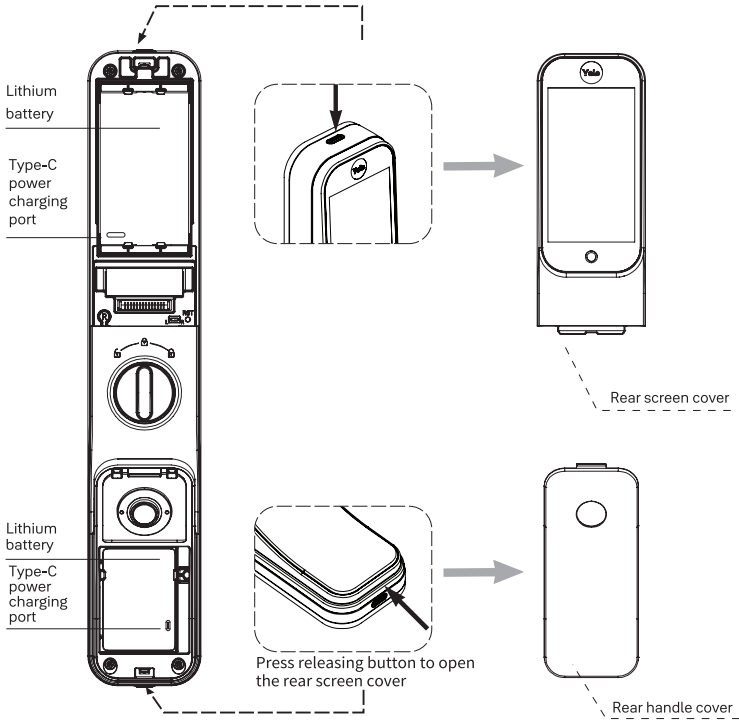
5.8 Emergency power supply

When the product is at the critical battery power level and not able to operate, an emergency power supply can be plugged into the emergency power supply port via a type-C USB cable for emergency access (not for charging)



5.9 Battery replacement

Please recharge / replace the lithium battery when you hear the voice reminder "replace the batteries"



Lithium battery:

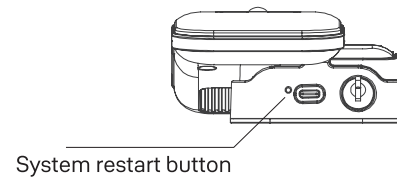
- 1. Remove battery cover from main body.
- 2. Remove the lithium battery and replace it with a fully-charged lithium battery, or charge the lithium battery via the on-battery-body type-C power charging port without removing the lithium battery until fully charged.
- 3. Secure the battery cover

⚠ Notes

- Powered by a rechargeable lithium battery. Charging time approximately 6-8 hours using a 5V2A charger; LED indicator lights: Red - charging in progress, Blue - Charging complete. Every full charge can last for 6-8 months (may vary depending on actual usage).

5.10 System restart

In the event if there is any system error and not able to operate the product, use a tool to press the system restart button for a reboot.



5.11 Power-saving Mode

When a low battery warning is prompted, the system will enter power-saving mode. In this mode, the radar, facescan, palmscan, video, and intercom functions will be disabled.

Protection and alarm

6.1 Low battery alarm

When the product is at the low battery power level, system will trigger a "replace the batteries" voice reminder with the power-saving mode activated. The system will trigger the "replace the batteries" voice reminder for every subsequent unlocking operation. The status indicator bar turns red. Under low battery power, the product can continue to work for ~50 times.

Please take immediate action to replace the battery.

6.2 Tampering alarm

A tampering alarm will be triggered when the front body is detached forcefully.

6.3 3-mins lock-out

When either FaceScan, fingerprint, CPU card, or PIN code accumulated with 5 failed attempts within 3 minutes, the 3-mins lock-out will be triggered with keypad backlight flashes.

1. The 3-mins lock-out will be lifted after 3 mins.
2. Other deactivation methods: (1) press the (R) button at the main body, (2) manual thumb turn. (3) Press the "lock/internal forced lock" and "touch sensor".

6.4 Intrusion alarm

An intrusion alarm will be triggered if the edge bolt pops out when the door is closed and locked

6.5 External forced lock alarm

The external forced lock alarm will be triggered if the door is opened from indoor.

⚠ Notes

- For 6.2, 6.4, and 6.5, an alarm with 80dB will be triggered, alarm will be stopped automatically after 3 mins, or alarm can be cancelled using the following methods:

Alarm deactivation methods:

1. Key in administrator code or any registered user code, then press (✱) button
2. Scan a registered CPU card
3. Scan a registered fingerprint
4. Hold the (R) button, "unlock" button or "lock / internal forced lock" button for 5 seconds

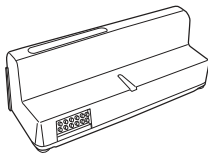
Important notes

- 1. Do not install the product in an outdoor environment with direct exposure to weather.
- 2. To prevent dirt on keypad and fingerprint area sensor, we recommend to use soft cloth for wipes. Do not spray water directly or wipe with chemicals such as benzene, gasoline or alcohol.
- 3. please use good quality alkaline batteries. It is recommended to replace the batteries every 6~10 months and check for battery leakages periodically.
- 4. It is recommended to replace / recharge the battery immediately when "replace the batteries" reminder is triggered to avoid any inconvenience.
- 5. Adjustment of the striker plate is recommended if the deadbolt is not able to retract or recede well due to door deformation.
- 6. The mortise may be damaged if the door is closed hard with the deadbolt protruded.
- 7. Please keep at least 1 mechanical key override out of the house (office / parents' house) for emergency use when needed.
- 8. When the battery is out, an emergency power supply can be provided through the emergency power supply port via type-C USB cable for emergency access (not for charging)

Networking module (optional accessories)

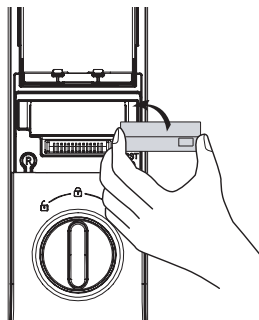
Networking module settings

Additional networking functions can be upgraded with the corresponding networking modules through a simple installation and configuration. Please refer to our sales office for further .

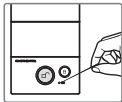


Networking module installation

- 1. Remove battery cover from main body, and all batteries.
- 2. Install the module into module slot
- 3. Reinstall the batteries.
- 4. Register the newly installed module following the steps below.



| Yale Home app | | | | | | | | | | | |
|-------------------------|---------------------|---|---|---|--------------------------------|---|---------------------|---|------------|----|--------|
| Registr-ation | Adminis-trator code | Ⓡ | 7 | # | Set up a new device in the app | | | | | | |
| Remote Contoller | | | | | | | | | | | |
| Registr-ation | Adminis-trator code | Ⓡ | 8 | # | 1 | # | User ID | # | SET Button | # | * OR Ⓡ |
| | | | | | 3 | # | User ID | # | * | OR | Ⓡ |
| Delete | | | | | | | | | | | |
| Home Network Controller | | | | | | | | | | | |
| Registr-ation | Adminis-trator code | Ⓡ | 9 | # | 1 | # | Cont roller | # | * | OR | Ⓡ |
| | | | | | 3 | # | Adminis-trator code | # | * | OR | Ⓡ |
| Delete | | | | | | | | | | | |



Remote Controller
Set with registration button located on the top of remote controller. You can press it using a pin like the one shown in the image.

Please note the following when pairing lock with Yale Home app.
- All credentials registered under standalone mode will be deleted when Yale Home app is installed and registered.