



APARTMENT & RESIDENTIAL

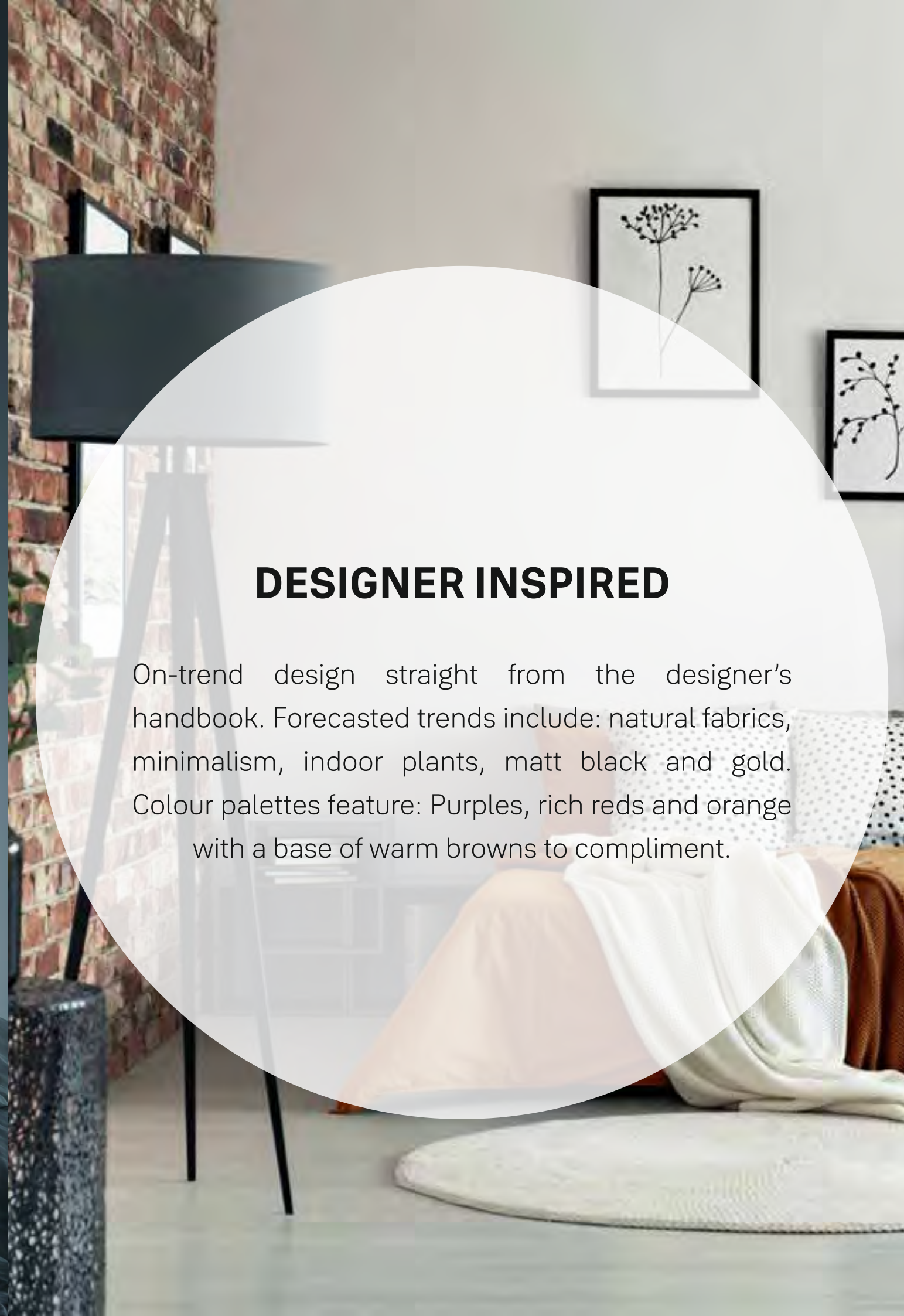
The Yale ESSENTIAL Range



GET THE LOOK

What's Your Style?

When building and designing a home or accommodation interior, the overall intent is to provide the end user with a unique experience. Whether it be their residential dwelling or accommodation, the space should evoke a feeling of comfort; an oasis that they can retreat too.



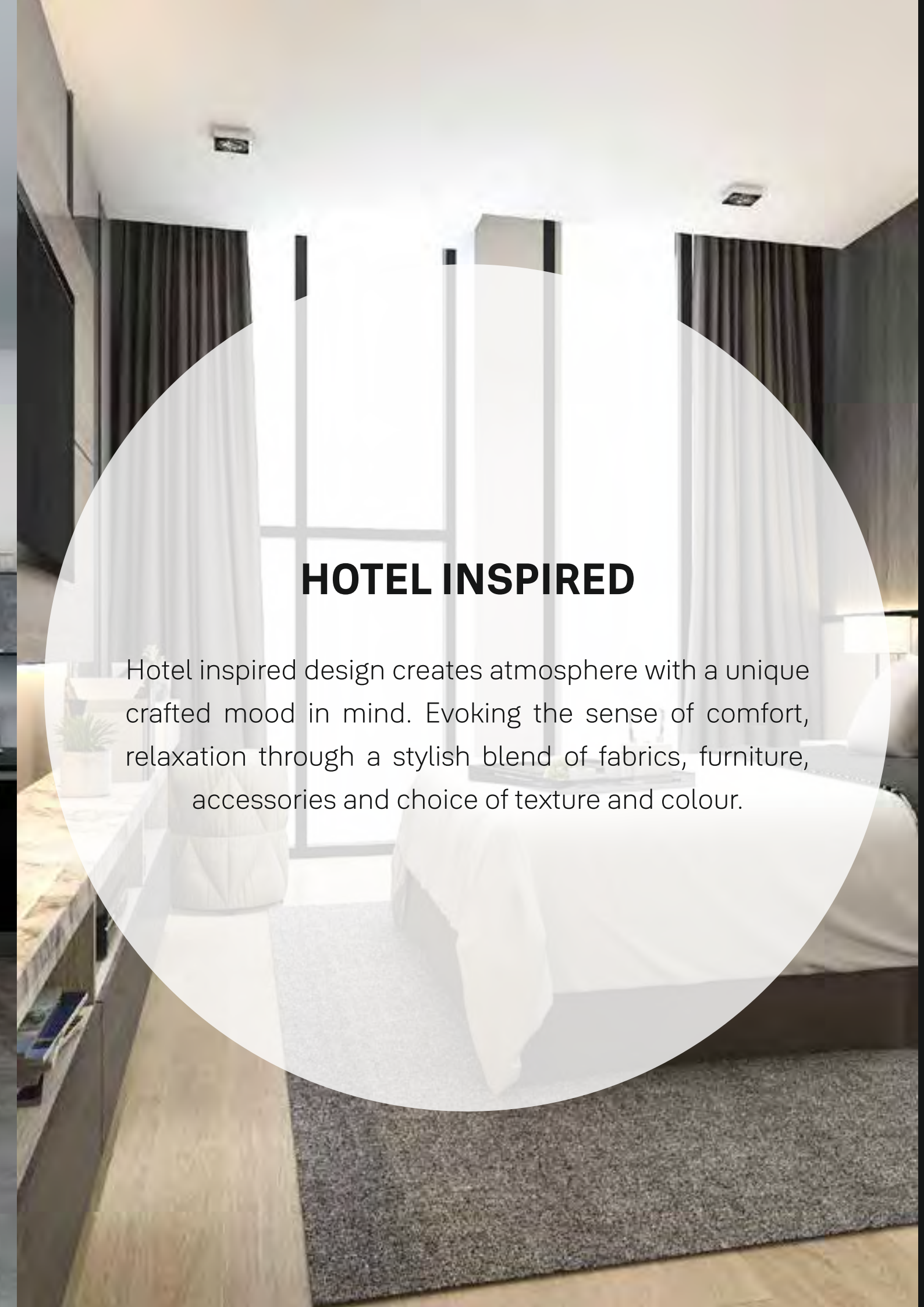
DESIGNER INSPIRED

On-trend design straight from the designer's handbook. Forecasted trends include: natural fabrics, minimalism, indoor plants, matt black and gold. Colour palettes feature: Purples, rich reds and orange with a base of warm browns to compliment.



CONTEMPORARY INSPIRED

Through luxurious simplicity, clean lines, timeless neutrals with small bursts of colour and interchangeable decorative details, this is a style that transcends time. With a key focus on architectural materials such as exposed brick, floorboards as the soul feature of the room creating a harmonious and warm space.



HOTEL INSPIRED

Hotel inspired design creates atmosphere with a unique crafted mood in mind. Evoking the sense of comfort, relaxation through a stylish blend of fabrics, furniture, accessories and choice of texture and colour.



Lever handle with 10"backplate



Thumbturn or Double cylinder



Lever handle with rose & escutcheons



Mortise Lockbody



Door Chain



Ball Bearing Hinges



Tower Bolt



Door Stopper



Door Viewer

Apartment Entry

Your home is a place where you feel the safest. It is your haven of memories and laughter that last a lifetime. But the minute you step out of your comfort zone, we are on our toes, protecting your safe haven. With Yale locking and door solutions, you can walk out with peace of mind because we have you covered.

Add a touch of elegance to your living space with Yale door handles and levers to sail through your home seamlessly. Enhance the functionality of your aesthetic doors with Yale accessories like door viewers, door chains, stoppers, tower bolts, and much more.

Lever Handle

Available Lever handle with 10"backplate, 8"backplate & rose & escutcheons thumbturn or double cylinder and lockbody

Specifications:

- Material : Zinc Alloy
- Spindle 8x8mm

Features:

- Conforms to EN1906:2012
- Tested to 200,000 cycles

Mortise Locks

Security of the doors are built with the use of the locking systems and for the same, mortise locks provides with wide functionality options and features. Yale mortise locks range are manufactured with EN standards and tested for durability. Make your doors life longer with Yale mortise locks

Features:

- Dead bolt : Zinc Alloy
- Latch : Zinc Alloy
- Forend & Strike plate :Steel
- Follower : Zinc Alloy
- Reversible Latchbolt

Specifications:

- Suitable for 25mm-45mm thick door.
- Suitable for wooden and steel door
- Latch Operated by handle or cylinder
- 45mm / 60mm Backset

Cylinder

Euro Profile Cylinders makes the mortise locks functional and makes doors operate for various application. Be it external doors, the cylinders makes the door secure. Yale offers computerised or regular keyways for customers to choose.

Specifications:

- Body : Zinc Alloy
- Knob : Zinc Alloy
- Keys : Brass
- Barrel : Brass

Features:

- Size available from 60mm-80mm
- Suitable for wooden and steel door

Door Accessories

Accessories brings in the element of functionalities and convenience to the door for its users. Yale has various choices of accessories which makes the door fully functional.



Bedroom

The bedroom is where you seek privacy, some quiet time, and tons of rest. At Yale, we strive to protect your privacy in your bedroom with our door locking solutions that enhance your rest time without any interruptions. With Yale door locks and accessories, you can also ensure the allure of the bedroom that you built.

Explore exquisite Yale door handles and Yale door accessories like tower bolts, door stoppers, and more.

Lever Handle

Available Lever handle with 8"backplate & rose & escutcheons thumbturn or double cylinder and lockbody

Specifications:

- Material : Zinc Alloy
- Spindle 8x8mm

Features:

- Conforms to EN1906:2012
- Tested to 200,000 cycles



Lever handle with 8"backplate

Thumbturn or Double cylinder

Key in Lever Handle

Lever handle with rose & escutcheons

Mortise Locks

Security of the doors are built with the use of the locking systems and for the same, mortise locks provides with wide functionality options and features. Yale mortise locks range are manufactured with EN standards and tested for durability. Make your doors life longer with Yale mortise locks

Features:

- Dead bolt : Zinc Alloy
- Latch : Zinc Alloy
- Forend & Strike plate : Steel
- Follower : Zinc Alloy
- Reversible Latchbolt

Specifications:

- Suitable for 25mm-45mm thick door.
- Suitable for wooden and steel door
- Latch Operated by handle or cylinder
- 45mm / 60mm Backset



Mortise Lockbody

Door Stopper

Ball Bearing Hinges

Tower Bolt

Cylinder

Euro Profile Cylinders makes the mortise locks functional and makes doors operate for various application. Be it external doors, the cylinders makes the door secure. Yale offers computerised or regular keyways for customers to choose.

Specifications:

- Body : Zinc Alloy
- Knob : Zinc Alloy
- Keys : Brass
- Barrel : Brass

Features:

- Size available from 60mm-80mm
- Suitable for wooden and steel door

Door Accessories

Accessories brings in the element of functionalities and convenience to the door for its users. Yale has various choices of accessories which makes the door fully functional.



Bathroom

Enter the world where problems don't exist and experience your personal shower of rain in your home ensuite. Transform your ensuite into a luxurious experience with Yale door solutions that will enable a seamless transition from a tiring day to a peaceful mind.

Pick out from the best Yale door handles and Yale accessories like tower bolts, stoppers, and more to redefine the meaning of bath.

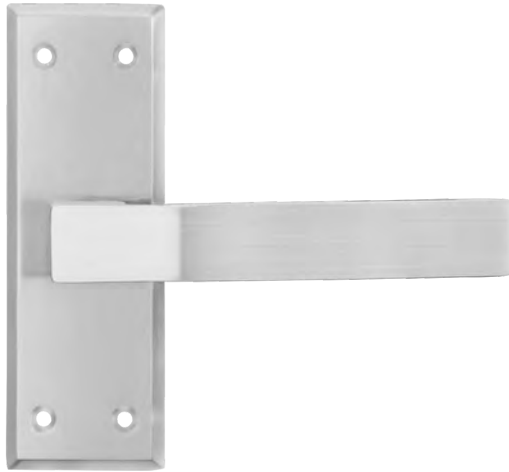
Lever Handle

Available Lever handle with 5"backplate with baby latch

- | | |
|---|--|
| Specifications: | Features: |
| <ul style="list-style-type: none">Material : Zinc AlloySpindle 8x8mm | <ul style="list-style-type: none">Conforms to EN1906:2012Tested to 200,000 cycles |

Door Accessories

Accessories brings in the element of functionalities and convenience to the door for its users. Yale has various choices of accessories which makes the door fully functional.



Lever handle with rose & escutcheons



Baby Latch Lockbody



Lever handle with 8"backplate



Mortise Lockbody



Privacy Cylinder



Ball Bearing Hinges



Tower Bolt



Quality and Range

The ideal choice for multi-residential developments.

Yale has recently launched the Yale Essential Range which showcases an exquisite range of door handles and levers for multi-residential developments that offer an affordable, quality solution.

Designed to enhance home spaces with stylish, yet secure solutions, Yale has left no stone unturned to conform to specific requirements.

We are the name you trust the most – Yale.

ESSENTIAL Series

Range Applications

Atria

Specifications:

- Material: Zinc Alloy
- Spindle 8x8mm

Features:

- Conforms to EN1906:2012
- Tested to 200,000 cycles

ESSENTIAL

Atria series



YE-1101-10P-TT/DC
Available Lever handle with 10"backplate
thumbturn or double cylinder and lockbody



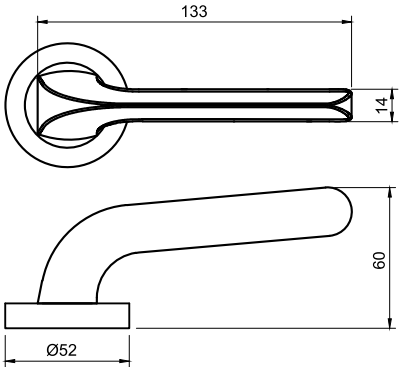
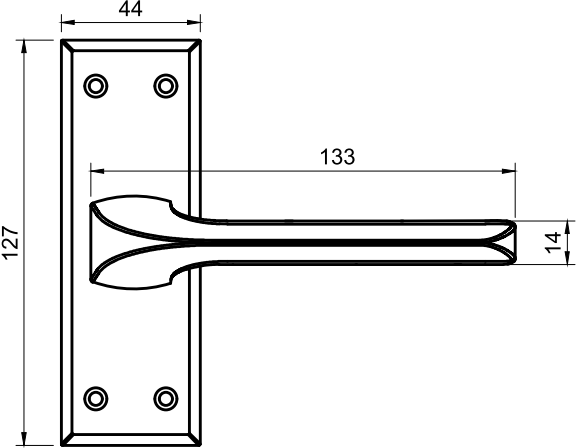
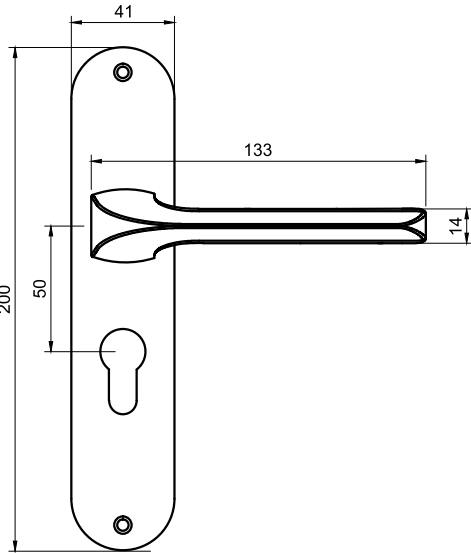
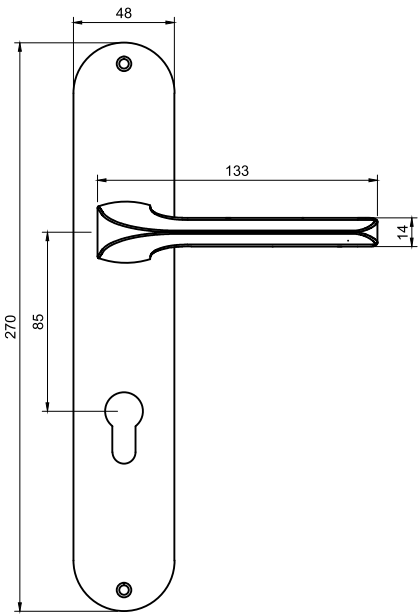
YE-1101-8P-TT/DC
Available Lever handle with 8"backplate
thumbturn or double cylinder and lockbody



YE-1101-5P-BL
Available Lever handle with 5"backplate
with baby latch



YE-1101-OR-TT/DC
Available Lever handle with rose & escutcheons
thumbturn or double cylinder and lockbody



Available colours



Antique Brass



Satin Steel



Black Matt

ESSENTIAL

Atria series

Available colours



Antique Brass



Satin Steel

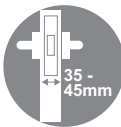


Black Matt

Product Codes	Descriptions	Finish
YE-1101-10P-TT-(__)	Available Lever handle with 10"backplate thumbturn cylinder and lockbody	AB/SS/BM
YE-1101-10P-DC-(__)	Available Lever handle with 10"backplate double cylinder and lockbody	AB/SS/BM
YE-1101-8P-TT-(__)	Available Lever handle with 8"backplate thumbturn cylinder and lockbody	AB/SS/BM
YE-1101-8P-DC-(__)	Available Lever handle with 8"backplate double cylinder and lockbody	AB/SS/BM
YE-1101-8P-BK-(__)	Available Lever handle with 8"backplate privacy cylinder & lockbody	AB/SS/BM
YE-1101-5P-BL-(__)	Available Lever handle with 5"backplate with baby latch	AB/SS/BM
YE-1101-OR-TT-(__)	Available Lever handle with Rose & Escutcheons with thumbturn and lockbody	AB/SS/BM
YE-1101-OR-DC-(__)	Available Lever handle with Rose & Escutcheons with double cylinder and lockbody	AB/SS/BM

(__) AB - Antique Brass / SS - Satin Steel / BM - Black Matt

TERMINOLOGIES : Cylinder
TT - One side thumbturn and other side key cylinder
DC - Bothside key cylinder
BL - Baby Latch
BK - Privacy Cylinder



ESSENTIAL

Atria series



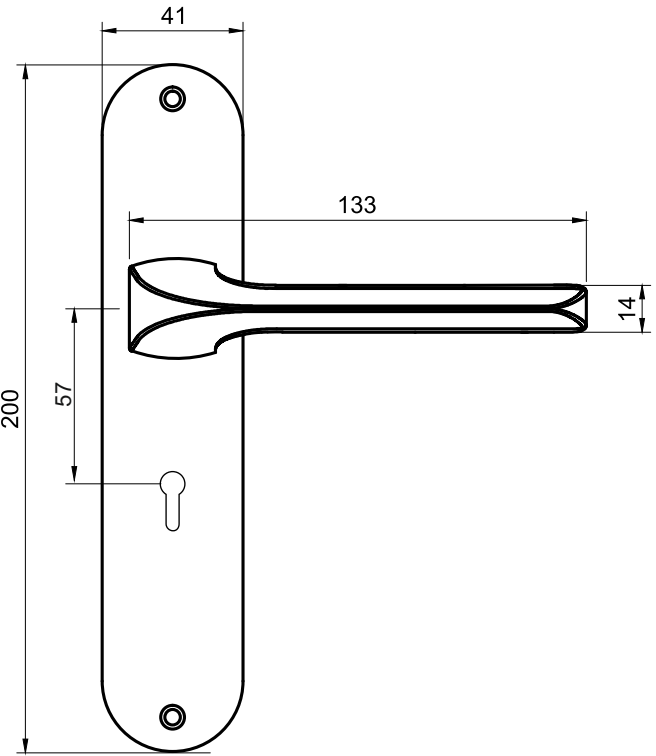
Also
available in
Key-in-Lever
Set

Key-in-Lever Mortise Combosets

(Key in Lever Lockbody and Handle)

Features:

- Conforms to EN1906:2012
- Tested to 200,000 cycles



Available colours



Antique Brass



Satin Steel



Black Matt

SKU's	Description	Finish
YE-1101-8P-6L-AB	Lever Handle on 8" Plate - Six Lever Mortise Body (AB)	Antique Brass
YE-1101-8P-6L-SS	Lever Handle on 8" Plate - Six Lever Mortise Body (SS)	Satin Steel
YE-1101-8P-6L-BM	Lever Handle on 8" Plate - Six Lever Mortise Body (BM)	Black Matt

ESSENTIAL Series

Range Applications

Specifications:

- Material: Zinc Alloy
- Spindle 8x8mm

Features:

- Conforms to EN1906:2012
- Tested to 200,000 cycles

ESSENTIAL

Eos series



YE-1102-10P-TT/DC
Available Lever handle with 10"backplate
thumbturn or double cylinder and lockbody



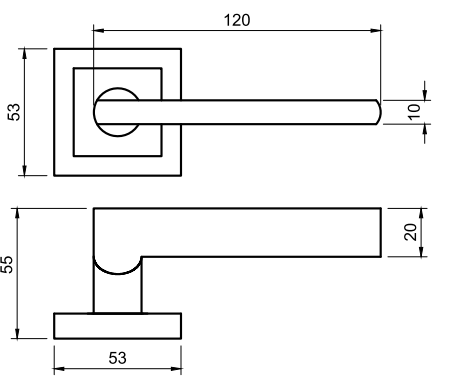
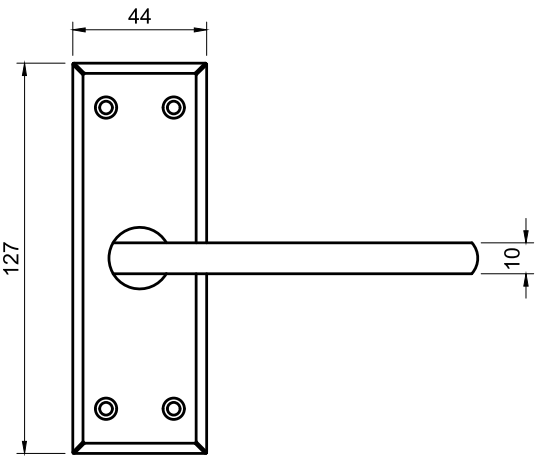
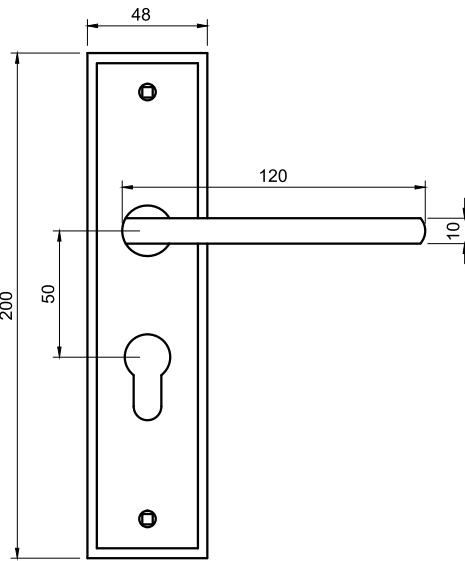
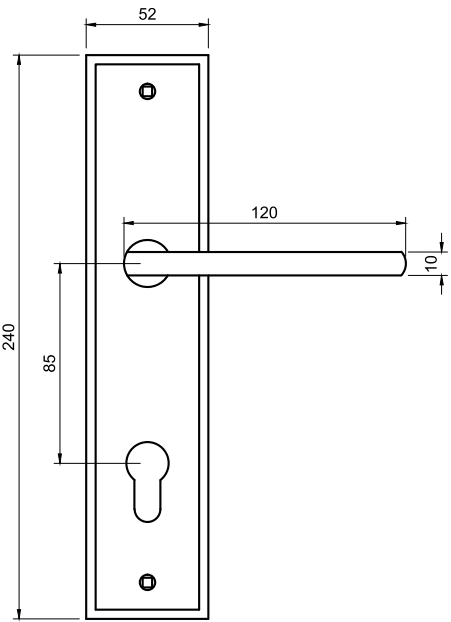
YE-1102-8P-TT/DC
Available Lever handle with 8"backplate
thumbturn or double cylinder and lockbody



YE-1102-5P-BL
Available Lever handle with 5"backplate
with baby latch



YE-1102-OR-TT/DC
Available Lever handle with rose & escutcheons
thumbturn or double cylinder and lockbody



Available colours



Antique Brass



Satin Steel

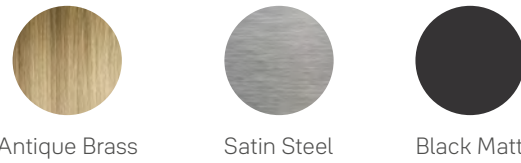


Black Matt

ESSENTIAL

Eos series

Available colours



Product Codes	Descriptions	Finish
YE-1102-10P-TT-(__)	Available Lever handle with 10"backplate thumbturn cylinder and lockbody	AB/SS/BM
YE-1102-10P-DC-(__)	Available Lever handle with 10"backplate double cylinder and lockbody	AB/SS/BM
YE-1102-8P-TT-(__)	Available Lever handle with 8"backplate thumbturn cylinder and lockbody	AB/SS/BM
YE-1102-8P-DC-(__)	Available Lever handle with 8"backplate double cylinder and lockbody	AB/SS/BM
YE-1102-8P-BK-(__)	Available Lever handle with 8"backplate privacy cylinder & lockbody	AB/SS/BM
YE-1102-5P-BL-(__)	Available Lever handle with 5"backplate with baby latch	AB/SS/BM
YE-1102-OR-TT-(__)	Available Lever handle with Rose & Escutcheons with thumbturn and lockbody	AB/SS/BM
YE-1102-OR-DC-(__)	Available Lever handle with Rose & Escutcheons with double cylinder and lockbody	AB/SS/BM

(__) AB - Antique Brass / SS - Satin Steel / BM - Black Matt

TERMINOLOGIES : Cylinder
TT - One side thumbturn and other side key cylinder
DC - Bothside key cylinder
BL - Baby Latch
BK - Privacy Cylinder



ESSENTIAL

Eos series

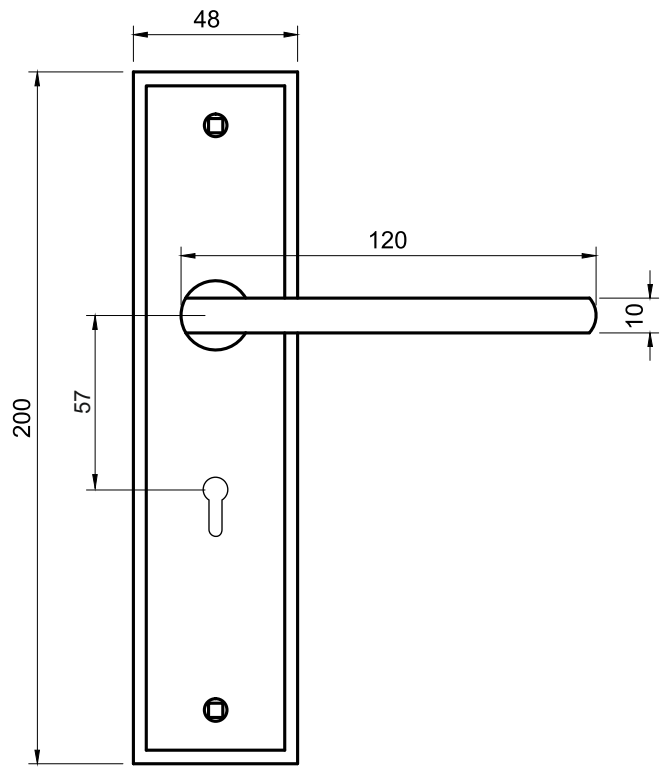


Key-in-Lever Mortise Combosets

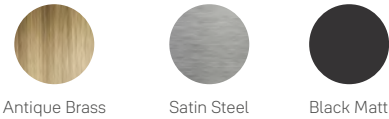
(Key in Lever Lockbody and Handle)

Features:

- Conforms to EN1906:2012
- Tested to 200,000 cycles



Available colours



SKU's	Description	Finish
YE-1102-8P-6L-AB	Lever Handle on 8" Plate - Six Lever Mortise Body (AB)	Antique Brass
YE-1102-8P-6L-SS	Lever Handle on 8" Plate - Six Lever Mortise Body (SS)	Satin Steel
YE-1102-8P-6L-BM	Lever Handle on 8" Plate - Six Lever Mortise Body (BM)	Black Matt

ESSENTIAL Series

Range Applications

Specifications:

- Material: Zinc Alloy
- Spindle 8x8mm

Features:

- Conforms to EN1906:2012
- Tested to 200,000 cycles



ESSENTIAL

Lynx series



YE-1103-10P-TT/DC
Available Lever handle with 10"backplate thumbturn or double cylinder and lockbody



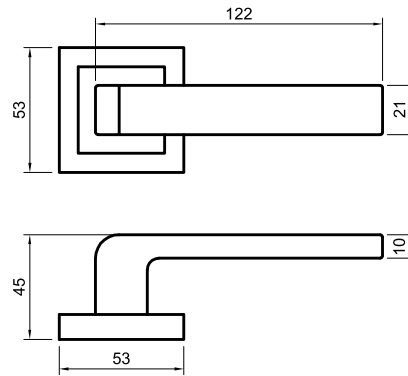
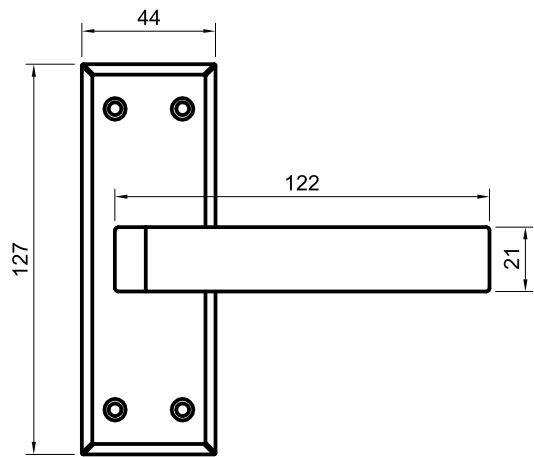
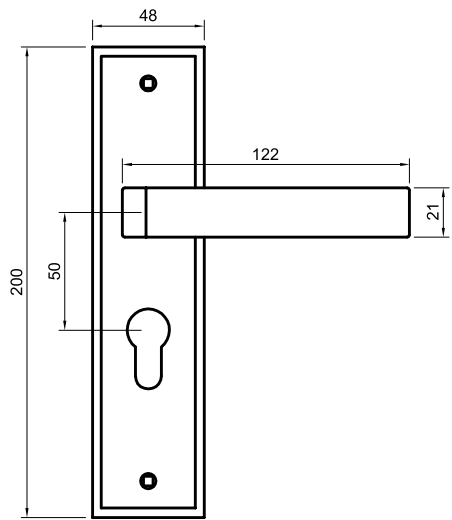
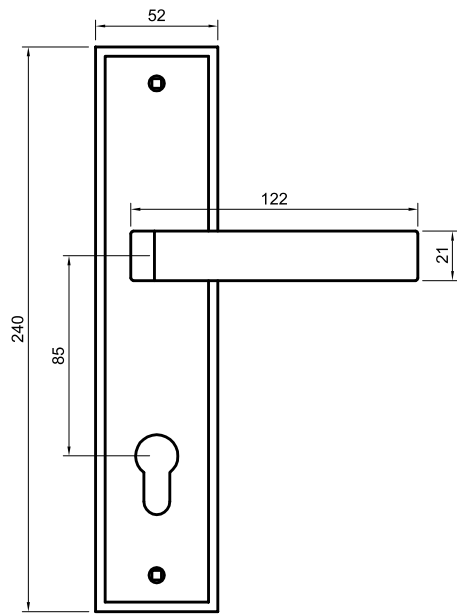
YE-1103-8P-TT/DC
Available Lever handle with 8"backplate thumbturn or double cylinder and lockbody



YE-1103-5P-BL
Available Lever handle with 5"backplate with baby latch



YE-1103-OR-TT/DC
Available Lever handle with rose & escutcheons thumbturn or double cylinder and lockbody



Available colours



Antique Brass



Satin Steel



Black Matt

ESSENTIAL

Lynx series

Available colours



Antique Brass



Satin Steel

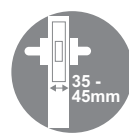


Black Matt

Product Codes	Descriptions	Finish
YE-1103-10P-TT-(__)	Available Lever handle with 10"backplate thumbturn cylinder and lockbody	AB/SS/BM
YE-1103-10P-DC-(__)	Available Lever handle with 10"backplate double cylinder and lockbody	AB/SS/BM
YE-1103-8P-TT-(__)	Available Lever handle with 8"backplate thumbturn cylinder and lockbody	AB/SS/BM
YE-1103-8P-DC-(__)	Available Lever handle with 8"backplate double cylinder and lockbody	AB/SS/BM
YE-1103-8P-BK-(__)	Available Lever handle with 8"backplate privacy cylinder & lockbody	AB/SS/BM
YE-1103-5P-BL-(__)	Available Lever handle with 5"backplate with baby latch	AB/SS/BM
YE-1103-OR-TT-(__)	Available Lever handle with Rose & Escutcheons with thumbturn and lockbody	AB/SS/BM
YE-1103-OR-DC-(__)	Available Lever handle with Rose & Escutcheons with double cylinder and lockbody	AB/SS/BM

(__) AB - Antique Brass / SS - Satin Steel / BM - Black Matt

TERMINOLOGIES : Cylinder
TT - One side thumbturn and other side key cylinder
DC - Bothside key cylinder
BL - Baby Latch
BK - Privacy Cylinder



ESSENTIAL

Lynx series



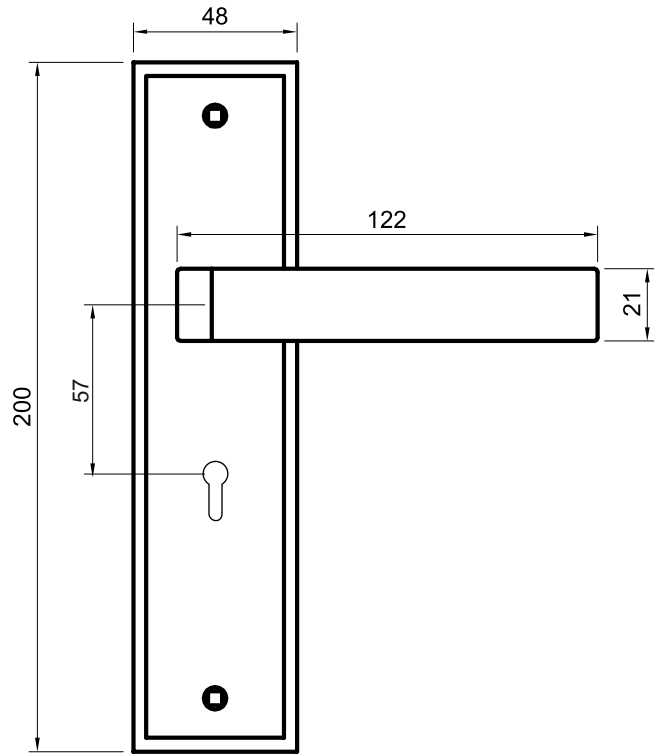
Also
available in
Key-in-Lever
Set

Key-in-Lever Mortise Combosets

(Key in Lever Lockbody and Handle)

Features:

- Conforms to EN1906:2012
- Tested to 200,000 cycles



Available colours



Antique Brass



Satin Steel



Black Matt

SKU's	Description	Finish
YE-1103-8P-6L-AB	Lever Handle on 8" Plate - Six Lever Mortise Body (AB)	Antique Brass
YE-1103-8P-6L-SS	Lever Handle on 8" Plate - Six Lever Mortise Body (SS)	Satin Steel
YE-1103-8P-6L-BM	Lever Handle on 8" Plate - Six Lever Mortise Body (BM)	Black Matt

ESSENTIAL Series

Range Applications

Sirius



Specifications:

- Material: Zinc Alloy
- Spindle 8x8mm

Features:

- Conforms to EN1906:2012
- Tested to 200,000 cycles

ESSENTIAL

Sirius series



YE-1104-10P-TT/DC
Available Lever handle with 10"backplate
thumbturn or double cylinder and lockbody



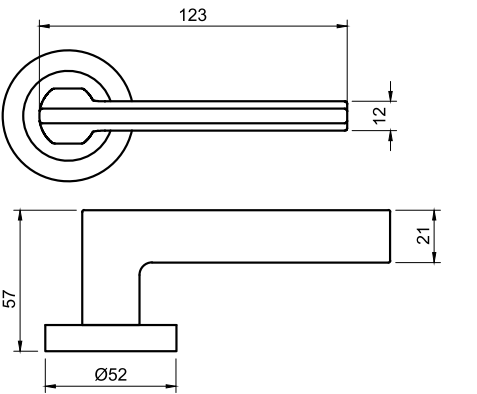
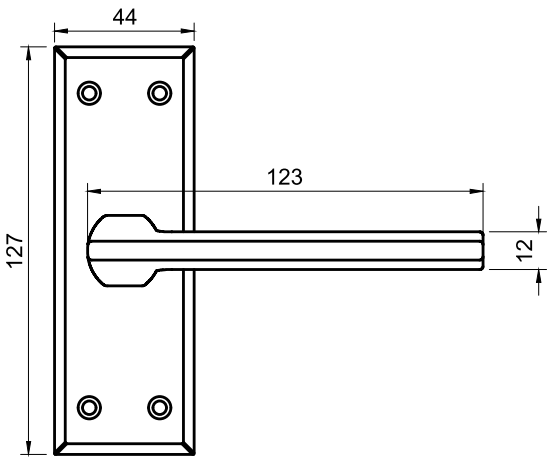
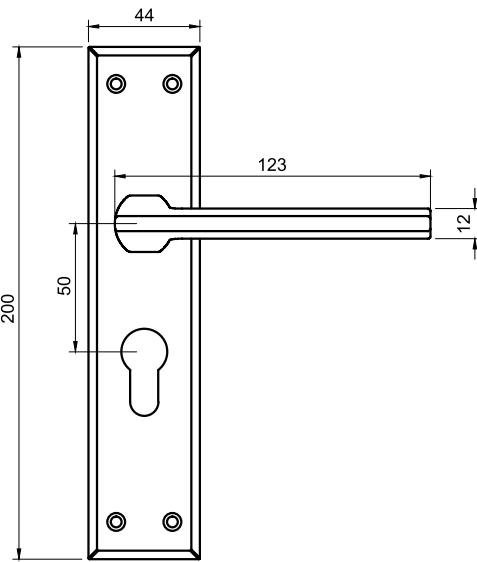
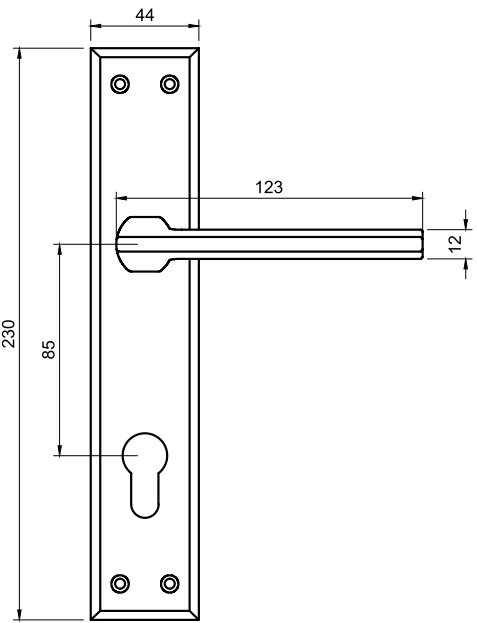
YE-1104-8P-TT/DC
Available Lever handle with 8"backplate
thumbturn or double cylinder and lockbody



YE-1104-5P-BL
Available Lever handle with 5"backplate
with baby latch



YE-1104-OR-TT/DC
Available Lever handle with rose & escutcheons
thumbturn or double cylinder and lockbody



Available colours



Antique Brass



Satin Steel

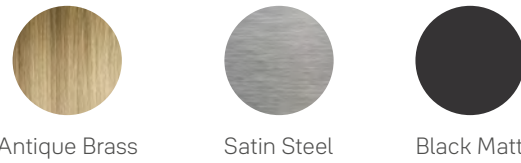


Black Matt

ESSENTIAL

Sirius series

Available colours



Product Codes	Descriptions	Finish
YE-1104-10P-TT-(__)	Available Lever handle with 10"backplate thumbturn cylinder and lockbody	AB/SS/BM
YE-1104-10P-DC-(__)	Available Lever handle with 10"backplate double cylinder and lockbody	AB/SS/BM
YE-1104-8P-TT-(__)	Available Lever handle with 8"backplate thumbturn cylinder and lockbody	AB/SS/BM
YE-1104-8P-DC-(__)	Available Lever handle with 8"backplate double cylinder and lockbody	AB/SS/BM
YE-1104-8P-BK-(__)	Available Lever handle with 8"backplate privacy cylinder & lockbody	AB/SS/BM
YE-1104-5P-BL-(__)	Available Lever handle with 5"backplate with baby latch	AB/SS/BM
YE-1104-OR-TT-(__)	Available Lever handle with Rose & Escutcheons with thumbturn and lockbody	AB/SS/BM
YE-1104-OR-DC-(__)	Available Lever handle with Rose & Escutcheons with double cylinder and lockbody	AB/SS/BM

(__) AB - Antique Brass / SS - Satin Steel / BM - Black Matt

TERMINOLOGIES : Cylinder
TT - One side thumbturn and other side key cylinder
DC - Bothside key cylinder
BL - Baby Latch
BK - Privacy Cylinder

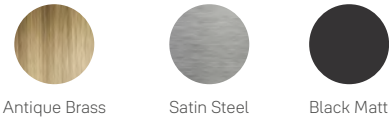


ESSENTIAL

Sirius series



Available colours



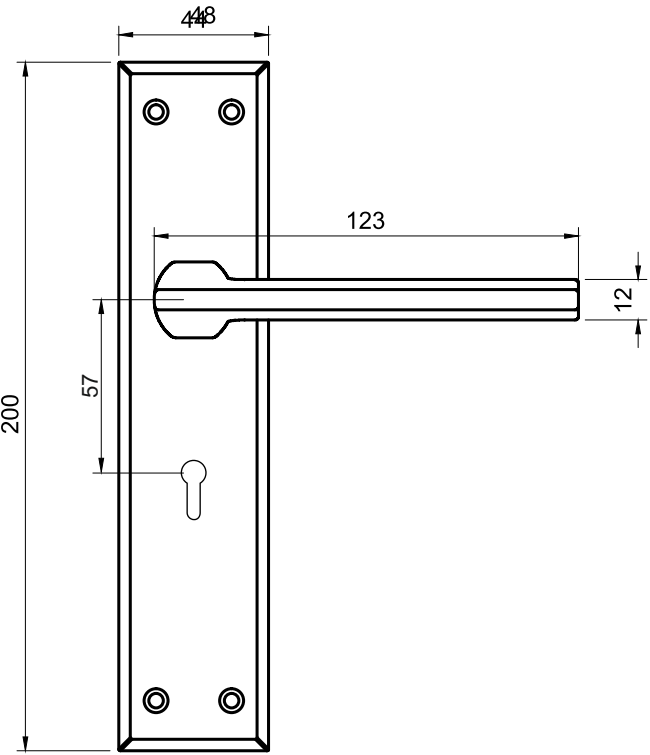
SKU's	Description	Finish
YE-1104-8P-6L-AB	Lever Handle on 8" Plate - Six Lever Mortise Body (AB)	Antique Brass
YE-1104-8P-6L-SS	Lever Handle on 8" Plate - Six Lever Mortise Body (SS)	Satin Steel
YE-1104-8P-6L-BM	Lever Handle on 8" Plate - Six Lever Mortise Body (BM)	Black Matt

Key-in-Lever Mortise Combosets

(Key in Lever Lockbody and Handle)

Features:

- Conforms to EN1906:2012
- Tested to 200,000 cycles



ESSENTIAL Series

Range Applications

Specifications:

- Material: Zinc Alloy
- Spindle 8x8mm

Features:

- Conforms to EN1906:2012
- Tested to 200,000 cycles



ESSENTIAL

Vega series



YE-1105-10P-TT/DC
Available Lever handle with 10"backplate
thumbturn or double cylinder and lockbody



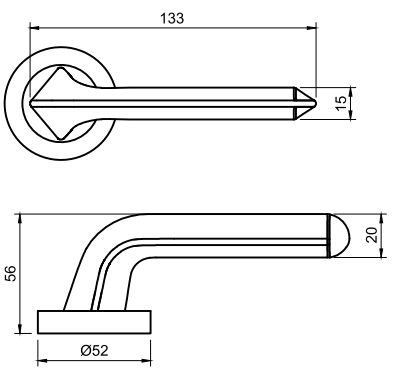
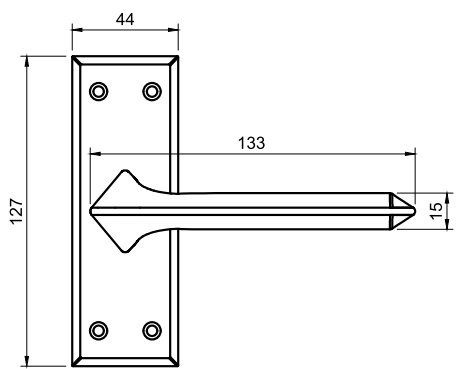
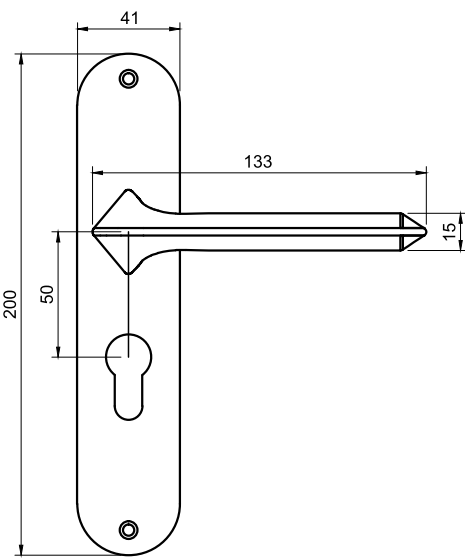
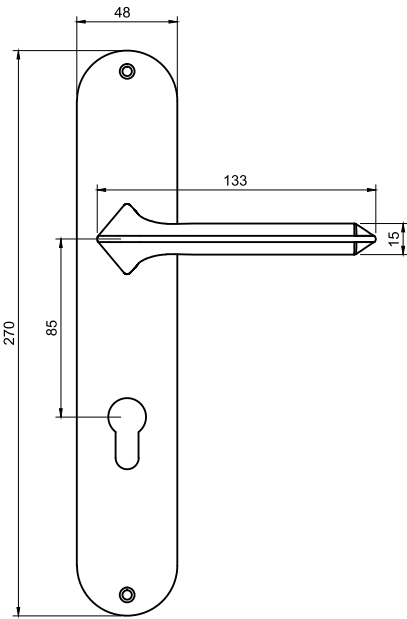
YE-1105-8P-TT/DC
Available Lever handle with 8"backplate
thumbturn or double cylinder and lockbody



YE-1105-5P-BL
Available Lever handle with 5"backplate
with baby latch



YE-1105-OR-TT/DC
Available Lever handle with rose & escutcheons
thumbturn or double cylinder and lockbody



Available colours



Antique Brass



Satin Steel

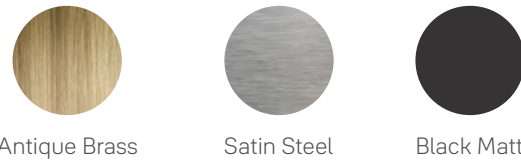


Black Matt

ESSENTIAL

Vega series

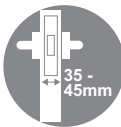
Available colours



Product Codes	Descriptions	Finish
YE-1105-10P-TT-(__)	Available Lever handle with 10"backplate thumbturn cylinder and lockbody	AB/SS/BM
YE-1105-10P-DC-(__)	Available Lever handle with 10"backplate double cylinder and lockbody	AB/SS/BM
YE-1105-8P-TT-(__)	Available Lever handle with 8"backplate thumbturn cylinder and lockbody	AB/SS/BM
YE-1105-8P-DC-(__)	Available Lever handle with 8"backplate double cylinder and lockbody	AB/SS/BM
YE-1105-8P-BK-(__)	Available Lever handle with 8"backplate privacy cylinder & lockbody	AB/SS/BM
YE-1105-5P-BL-(__)	Available Lever handle with 5"backplate with baby latch	AB/SS/BM
YE-1105-OR-TT-(__)	Available Lever handle with Rose & Escutcheons with thumbturn and lockbody	AB/SS/BM
YE-1105-OR-DC-(__)	Available Lever handle with Rose & Escutcheons with double cylinder and lockbody	AB/SS/BM

(__) AB - Antique Brass / SS - Satin Steel / BM - Black Matt

TERMINOLOGIES : Cylinder
TT - One side thumbturn and other side key cylinder
DC - Bothside key cylinder
BL - Baby Latch
BK - Privacy Cylinder

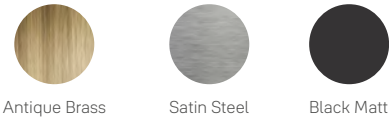


ESSENTIAL

Vega series



Available colours



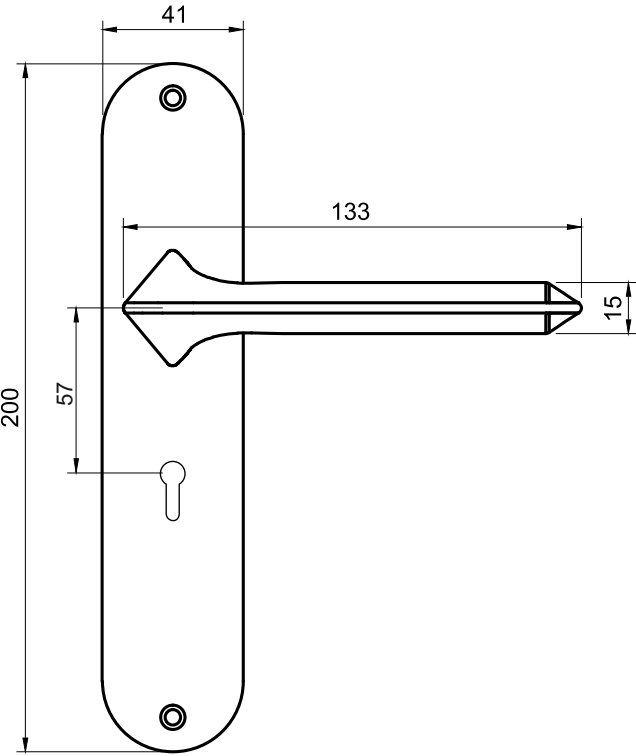
SKU's	Description	Finish
YE-1105-8P-6L-AB	Lever Handle on 8" Plate - Six Lever Mortise Body (AB)	Antique Brass
YE-1105-8P-6L-SS	Lever Handle on 8" Plate - Six Lever Mortise Body (SS)	Satin Steel
YE-1105-8P-6L-BM	Lever Handle on 8" Plate - Six Lever Mortise Body (BM)	Black Matt

Key-in-Lever Mortise Combosets

(Key in Lever Lockbody and Handle)

Features:

- Conforms to EN1906:2012
- Tested to 200,000 cycles



ESSENTIAL Series

Range Applications

Specifications:

- Material: Zinc Alloy
- Spindle 8x8mm

Features:

- Conforms to EN1906:2012
- Tested to 200,000 cycles

ESSENTIAL

Electra series



YE-1106-10P-TT/DC
Available Lever handle with 10"backplate thumbturn or double cylinder and lockbody



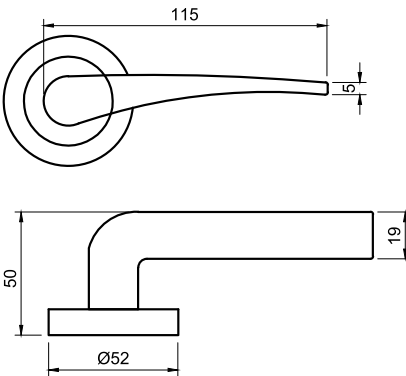
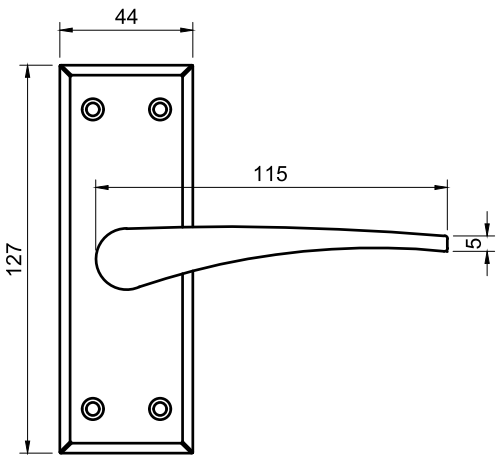
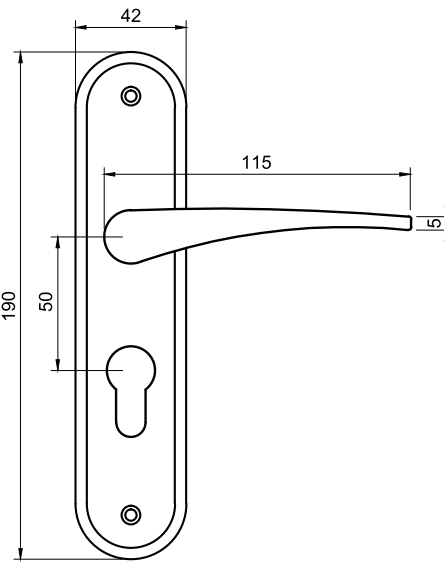
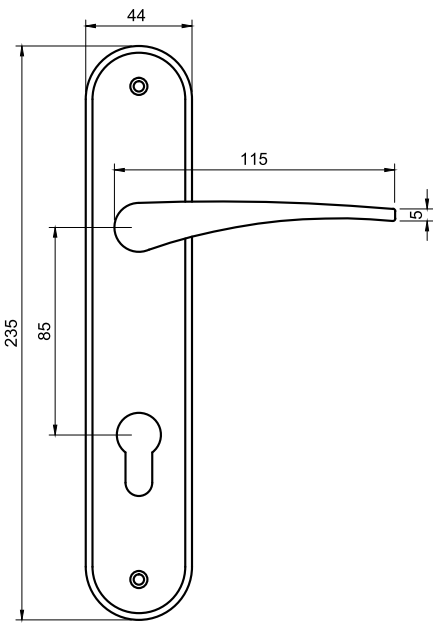
YE-1106-8P-TT/DC
Available Lever handle with 8"backplate thumbturn or double cylinder and lockbody



YE-1106-5P-BL
Available Lever handle with 5"backplate with baby latch



YE-1106-OR-TT/DC
Available Lever handle with rose & escutcheons thumbturn or double cylinder and lockbody



Electra



Available colours



Antique Brass



Satin Steel

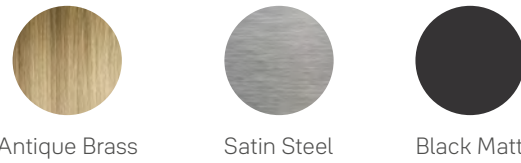


Black Matt

ESSENTIAL

Electra series

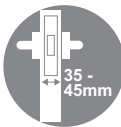
Available colours



Product Codes	Descriptions	Finish
YE-1106-10P-TT-(__)	Available Lever handle with 10"backplate thumbturn cylinder and lockbody	AB/SS/BM
YE-1106-10P-DC-(__)	Available Lever handle with 10"backplate double cylinder and lockbody	AB/SS/BM
YE-1106-8P-TT-(__)	Available Lever handle with 8"backplate thumbturn cylinder and lockbody	AB/SS/BM
YE-1106-8P-DC-(__)	Available Lever handle with 8"backplate double cylinder and lockbody	AB/SS/BM
YE-1106-8P-BK-(__)	Available Lever handle with 8"backplate privacy cylinder & lockbody	AB/SS/BM
YE-1106-5P-BL-(__)	Available Lever handle with 5"backplate with baby latch	AB/SS/BM
YE-1106-OR-TT-(__)	Available Lever handle with Rose & Escutcheons with thumbturn and lockbody	AB/SS/BM
YE-1106-OR-DC-(__)	Available Lever handle with Rose & Escutcheons with double cylinder and lockbody	AB/SS/BM

(__) AB - Antique Brass / SS - Satin Steel / BM - Black Matt

TERMINOLOGIES : Cylinder
TT - One side thumbturn and other side key cylinder
DC - Bothside key cylinder
BL - Baby Latch
BK - Privacy Cylinder



ESSENTIAL

Electra series

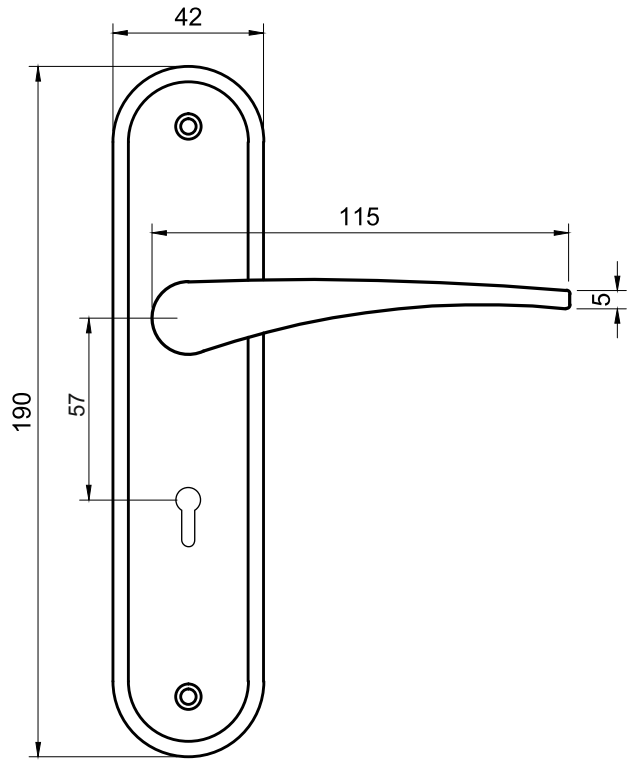


Key-in-Lever Mortise Combosets

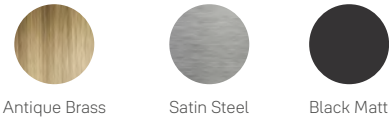
(Key in Lever Lockbody and Handle)

Features:

- Conforms to EN1906:2012
- Tested to 200,000 cycles



Available colours



SKU's	Description	Finish
YE-1106-8P-6L-AB	Lever Handle on 8" Plate - Six Lever Mortise Body (AB)	Antique Brass
YE-1106-8P-6L-SS	Lever Handle on 8" Plate - Six Lever Mortise Body (SS)	Satin Steel
YE-1106-8P-6L-BM	Lever Handle on 8" Plate - Six Lever Mortise Body (BM)	Black Matt

ESSENTIAL Series

Range Applications



Specifications:

- Material: Zinc Alloy
- Spindle 8x8mm

Features:

- Conforms to EN1906:2012
- Tested to 200,000 cycles

Arches

ESSENTIAL

Arches series



YE-1107-10P-TT/DC
Available Lever handle with 10"backplate thumbturn or double cylinder and lockbody



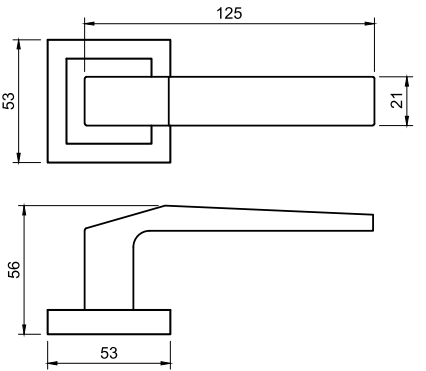
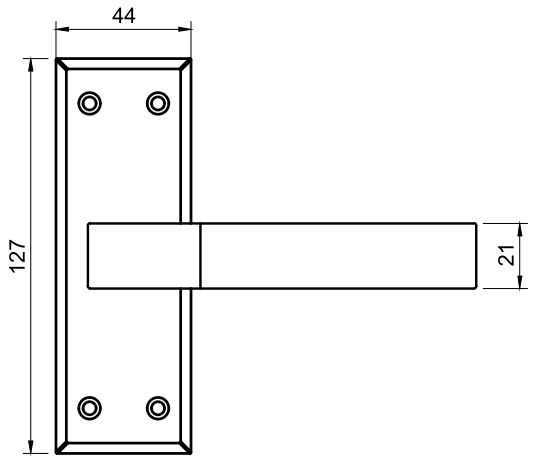
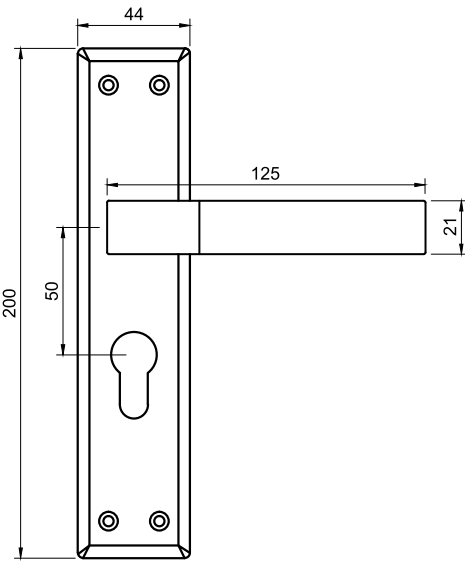
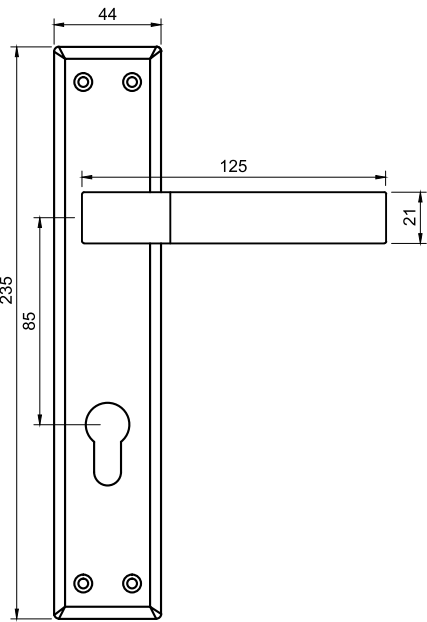
YE-1107-8P-TT/DC
Available Lever handle with 8"backplate thumbturn or double cylinder and lockbody



YE-1107-5P-BL
Available Lever handle with 5"backplate with baby latch



YE-1107-OR-TT/DC
Available Lever handle with rose & escutcheons thumbturn or double cylinder and lockbody



Available colours



Antique Brass



Satin Steel

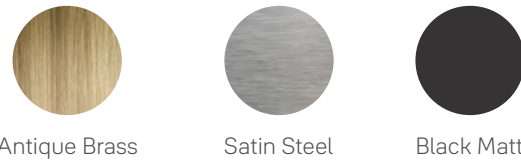


Black Matt

ESSENTIAL

Arches series

Available colours



Product Codes	Descriptions	Finish
YE-1107-10P-TT-(__)	Available Lever handle with 10"backplate thumbturn cylinder and lockbody	AB/SS/BM
YE-1107-10P-DC-(__)	Available Lever handle with 10"backplate double cylinder and lockbody	AB/SS/BM
YE-1107-8P-TT-(__)	Available Lever handle with 8"backplate thumbturn cylinder and lockbody	AB/SS/BM
YE-1107-8P-DC-(__)	Available Lever handle with 8"backplate double cylinder and lockbody	AB/SS/BM
YE-1107-8P-BK-(__)	Available Lever handle with 8"backplate privacy cylinder & lockbody	AB/SS/BM
YE-1107-5P-BL-(__)	Available Lever handle with 5"backplate with baby latch	AB/SS/BM
YE-1107-OR-TT-(__)	Available Lever handle with Rose & Escutcheons with thumbturn and lockbody	AB/SS/BM
YE-1107-OR-DC-(__)	Available Lever handle with Rose & Escutcheons with double cylinder and lockbody	AB/SS/BM

(__) AB - Antique Brass / SS - Satin Steel / BM - Black Matt

TERMINOLOGIES : Cylinder
TT - One side thumbturn and other side key cylinder
DC - Bothside key cylinder
BL - Baby Latch
BK - Privacy Cylinder



ESSENTIAL

Arches series

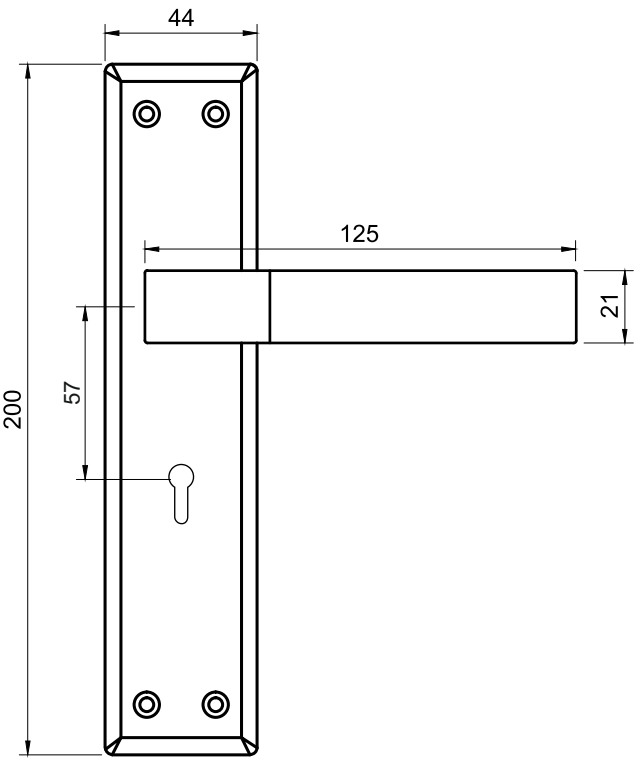


Key-in-Lever Mortise Combosets

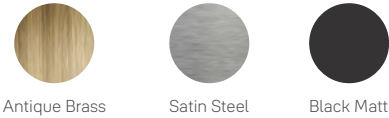
(Key in Lever Lockbody and Handle)

Features:

- Conforms to EN1906:2012
- Tested to 200,000 cycles



Available colours



SKU's	Description	Finish
YE-1107-8P-6L-AB	Lever Handle on 8" Plate - Six Lever Mortise Body (AB)	Antique Brass
YE-1107-8P-6L-SS	Lever Handle on 8" Plate - Six Lever Mortise Body (SS)	Satin Steel
YE-1107-8P-6L-BM	Lever Handle on 8" Plate - Six Lever Mortise Body (BM)	Black Matt

ESSENTIAL Series

Range Applications

Orion

Specifications:

- Material: Zinc Alloy
- Spindle 8x8mm

Features:

- Conforms to EN1906:2012
- Tested to 200,000 cycles

ESSENTIAL

Orion series



YE-1108-10P-TT/DC
Available Lever handle with 10"backplate thumbturn or double cylinder and lockbody



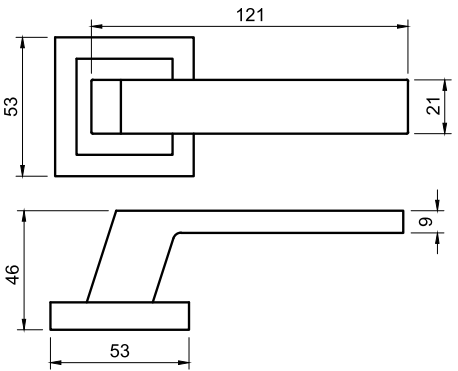
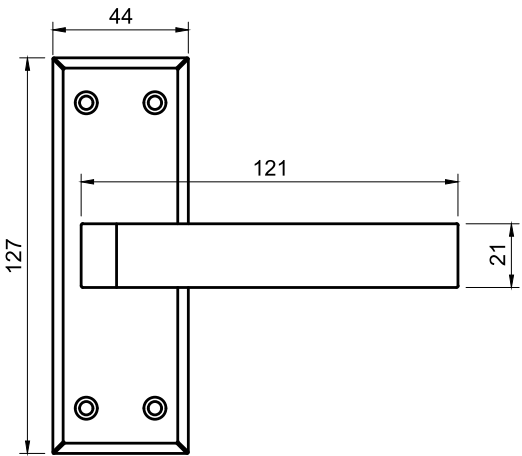
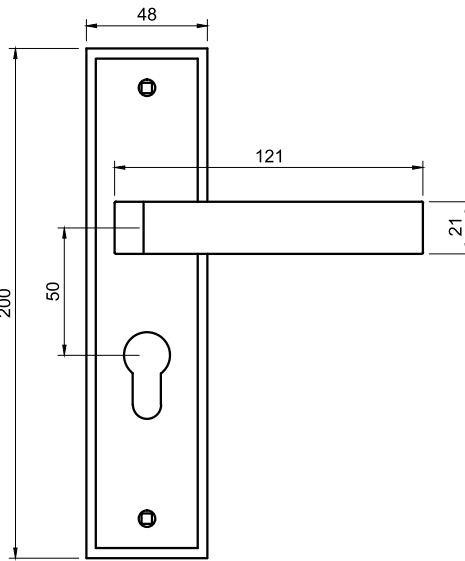
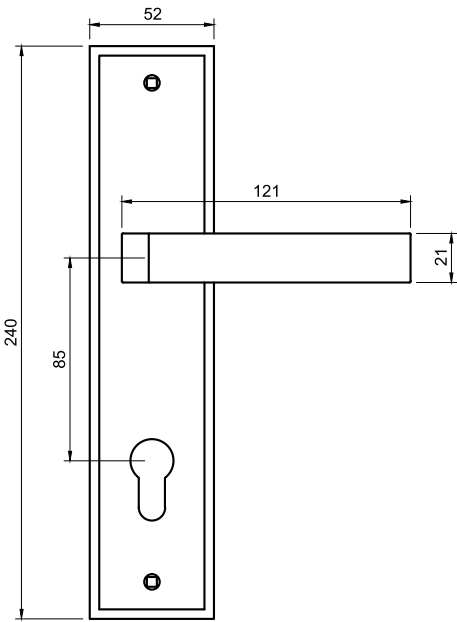
YE-1108-8P-TT/DC
Available Lever handle with 8"backplate thumbturn or double cylinder and lockbody



YE-1108-5P-BL
Available Lever handle with 5"backplate with baby latch



YE-1108-OR-TT/DC
Available Lever handle with rose & escutcheons thumbturn or double cylinder and lockbody



Available colours



Antique Brass



Satin Steel

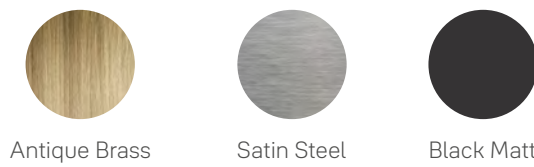


Black Matt

ESSENTIAL

Orion series

Available colours



Product Codes	Descriptions	Finish
YE-1108-10P-TT-(__)	Available Lever handle with 10"backplate thumbturn cylinder and lockbody	AB/SS/BM
YE-1108-10P-DC-(__)	Available Lever handle with 10"backplate double cylinder and lockbody	AB/SS/BM
YE-1108-8P-TT-(__)	Available Lever handle with 8"backplate thumbturn cylinder and lockbody	AB/SS/BM
YE-1108-8P-DC-(__)	Available Lever handle with 8"backplate double cylinder and lockbody	AB/SS/BM
YE-1108-8P-BK-(__)	Available Lever handle with 8"backplate privacy cylinder & lockbody	AB/SS/BM
YE-1108-5P-BL-(__)	Available Lever handle with 5"backplate with baby latch	AB/SS/BM
YE-1108-OR-TT-(__)	Available Lever handle with Rose & Escutcheons with thumbturn and lockbody	AB/SS/BM
YE-1108-OR-DC-(__)	Available Lever handle with Rose & Escutcheons with double cylinder and lockbody	AB/SS/BM

(__) AB - Antique Brass / SS - Satin Steel / BM - Black Matt

TERMINOLOGIES : Cylinder
TT - One side thumbturn and other side key cylinder
DC - Bothside key cylinder
BL - Baby Latch
BK - Privacy Cylinder



ESSENTIAL

Orion series

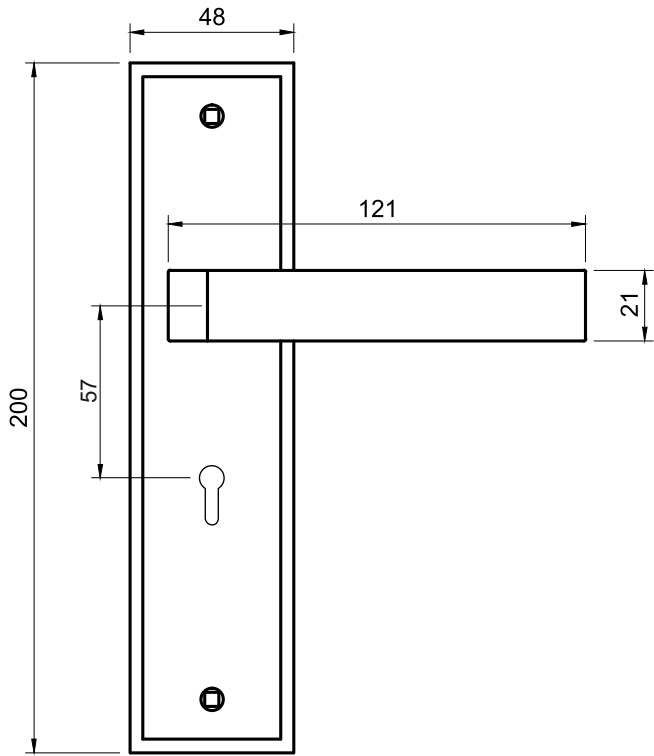


Key-in-Lever Mortise Combosets

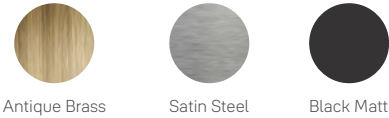
(Key in Lever Lockbody and Handle)

Features:

- Conforms to EN1906:2012
- Tested to 200,000 cycles



Available colours



SKU's	Description	Finish
YE-1108-8P-6L-AB	Lever Handle on 8" Plate - Six Lever Mortise Body (AB)	Antique Brass
YE-1108-8P-6L-SS	Lever Handle on 8" Plate - Six Lever Mortise Body (SS)	Satin Steel
YE-1108-8P-6L-BM	Lever Handle on 8" Plate - Six Lever Mortise Body (BM)	Black Matt

ESSENTIAL Series

Range Applications



Specifications:

- Material: Zinc Alloy
- Spindle 8x8mm

Features:

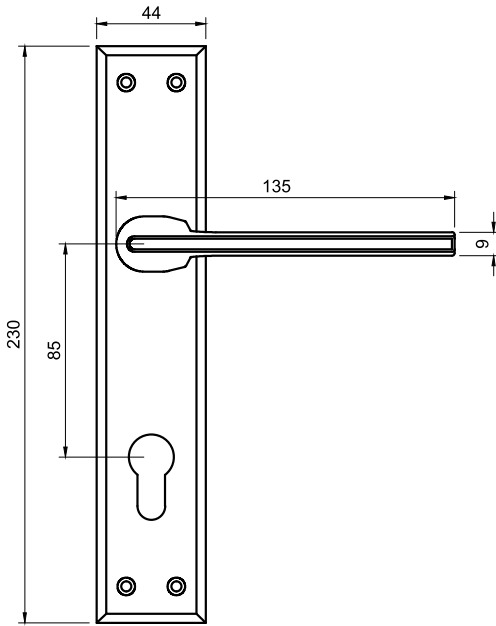
- Conforms to EN1906:2012
- Tested to 200,000 cycles

ESSENTIAL

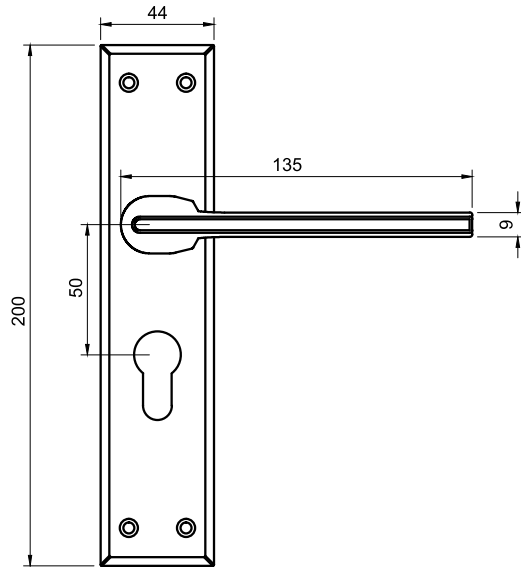
Mira series



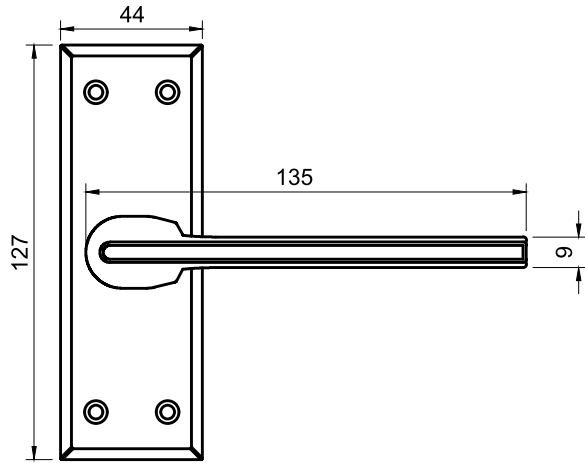
YE-1109-10P-TT/DC
Available Lever handle with 10" backplate
thumbturn or double cylinder and lockbody



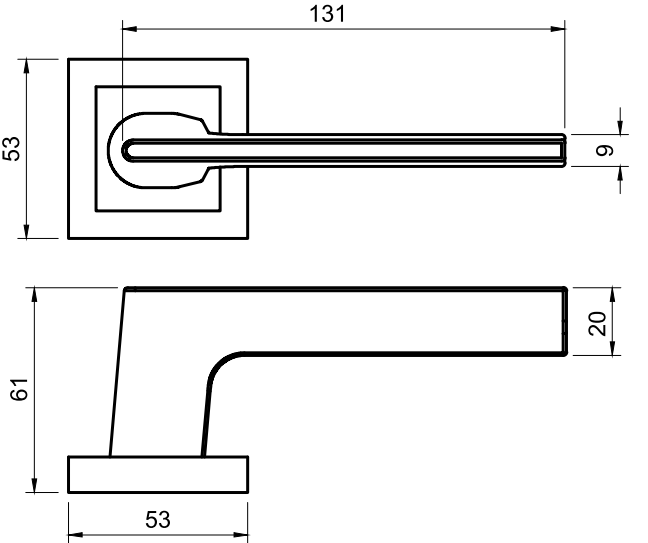
YE-1109-8P-TT/DC
Available Lever handle with 8" backplate
thumbturn or double cylinder and lockbody



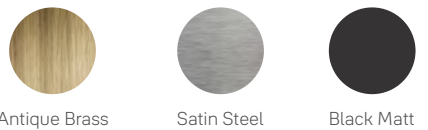
YE-1109-5P-BL
Available Lever handle with 5" backplate
with baby latch



YE-1109-OR-TT/DC
Available Lever handle with rose & escutcheons
thumbturn or double cylinder and lockbody



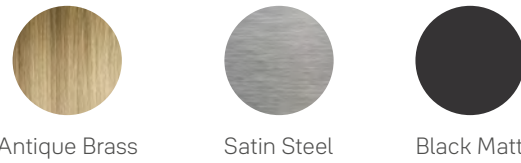
Available colours



ESSENTIAL

Mira series

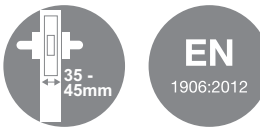
Available colours



Product Codes	Descriptions	Finish
YE-1109-10P-TT-(__)	Available Lever handle with 10"backplate thumbturn cylinder and lockbody	AB/SS/BM
YE-1109-10P-DC-(__)	Available Lever handle with 10"backplate double cylinder and lockbody	AB/SS/BM
YE-1109-8P-TT-(__)	Available Lever handle with 8"backplate thumbturn cylinder and lockbody	AB/SS/BM
YE-1109-8P-DC-(__)	Available Lever handle with 8"backplate double cylinder and lockbody	AB/SS/BM
YE-1109-8P-BK-(__)	Available Lever handle with 8"backplate privacy cylinder & lockbody	AB/SS/BM
YE-1109-5P-BL-(__)	Available Lever handle with 5"backplate with baby latch	AB/SS/BM
YE-1109-OR-TT-(__)	Available Lever handle with Rose & Escutcheons with thumbturn and lockbody	AB/SS/BM
YE-1109-OR-DC-(__)	Available Lever handle with Rose & Escutcheons with double cylinder and lockbody	AB/SS/BM

(__) AB - Antique Brass / SS - Satin Steel / BM - Black Matt

TERMINOLOGIES : Cylinder
TT - One side thumbturn and other side key cylinder
DC - Bothside key cylinder
BL - Baby Latch
BK - Privacy Cylinder



ESSENTIAL

Mira series

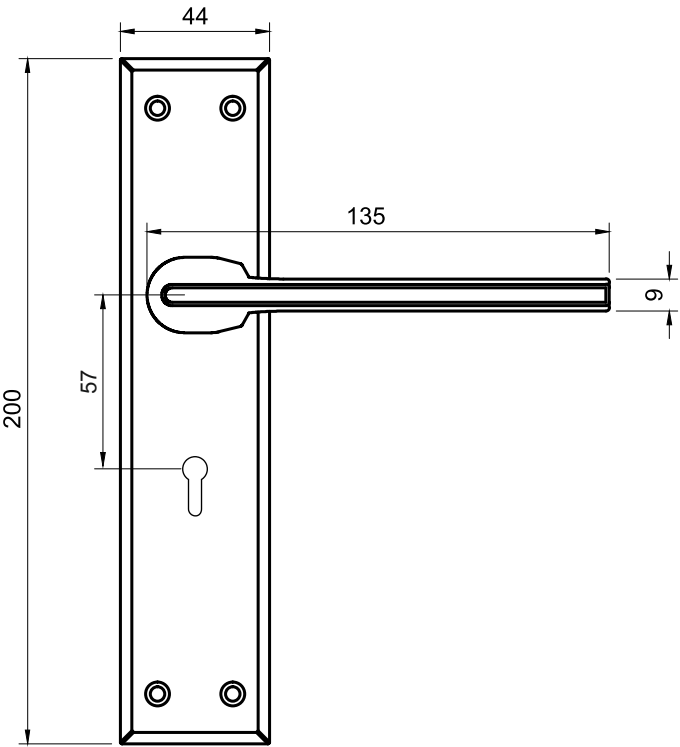


Key-in-Lever Mortise Combosets

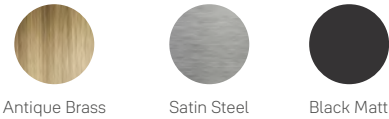
(Key in Lever Lockbody and Handle)

Features:

- Conforms to EN1906:2012
- Tested to 200,000 cycles



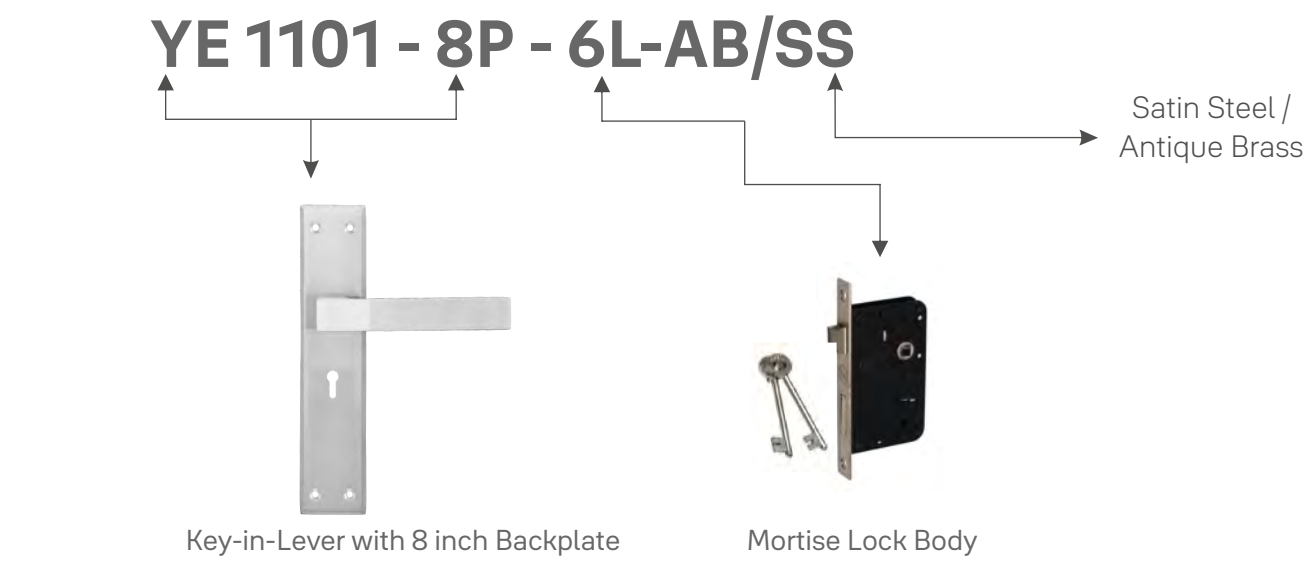
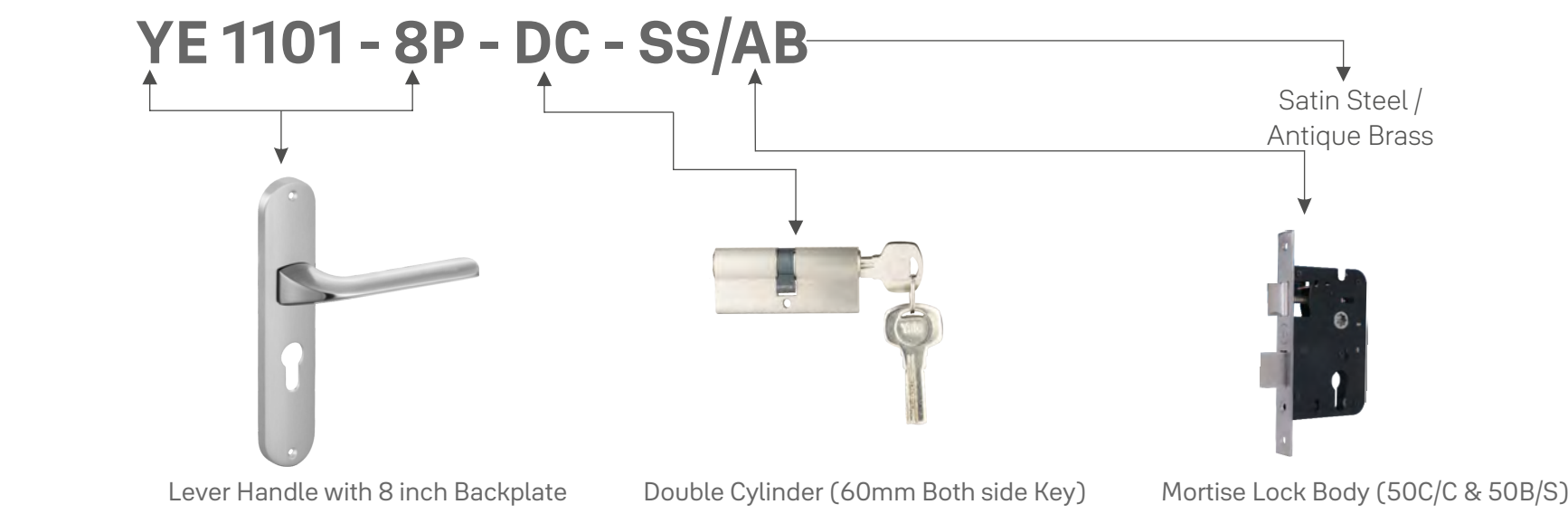
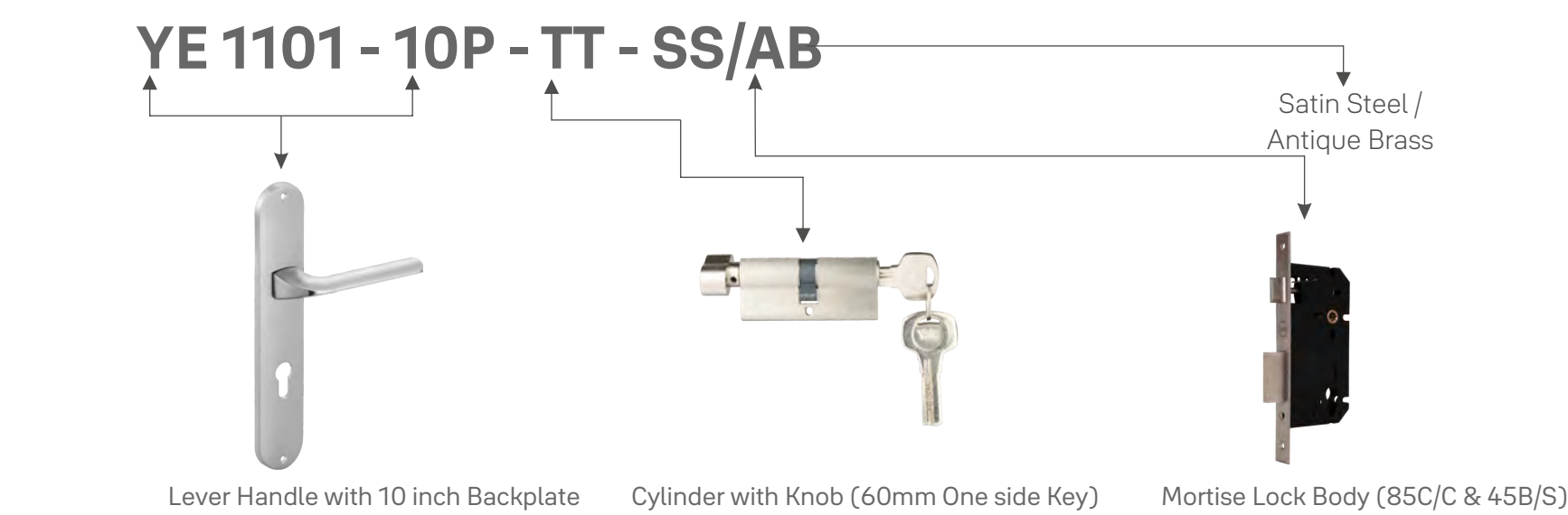
Available colours



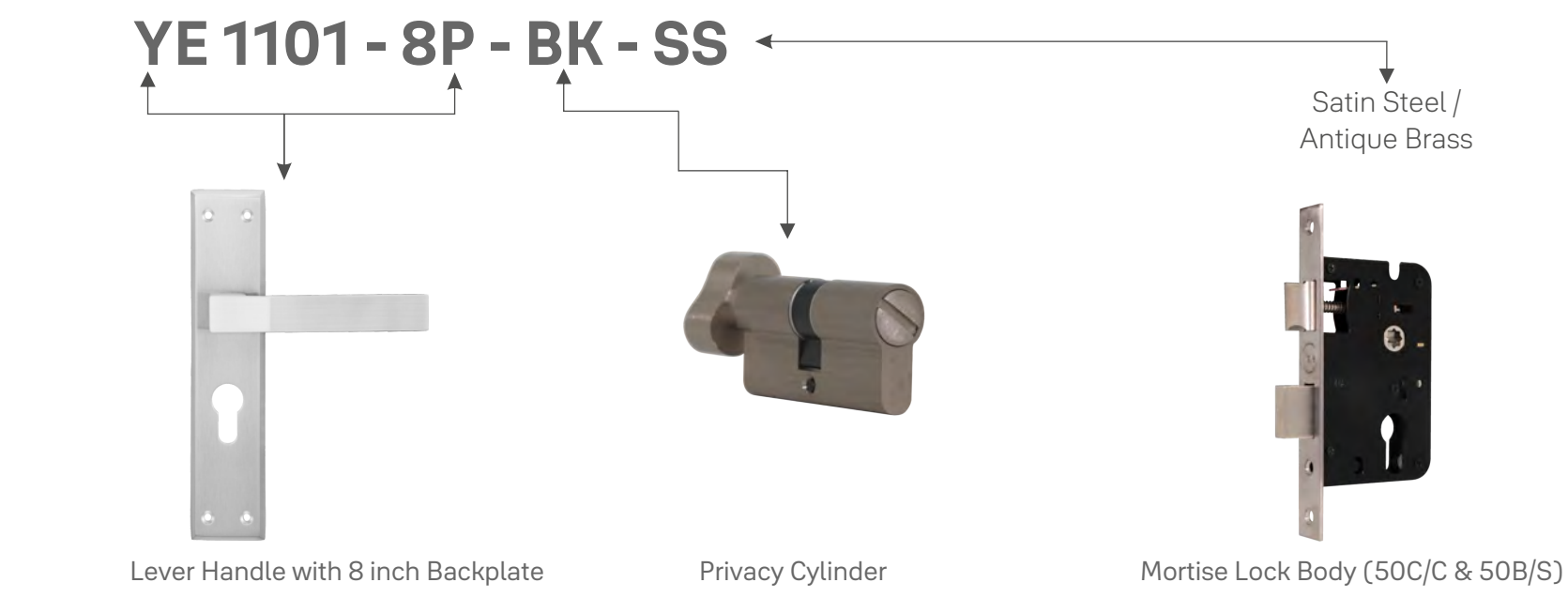
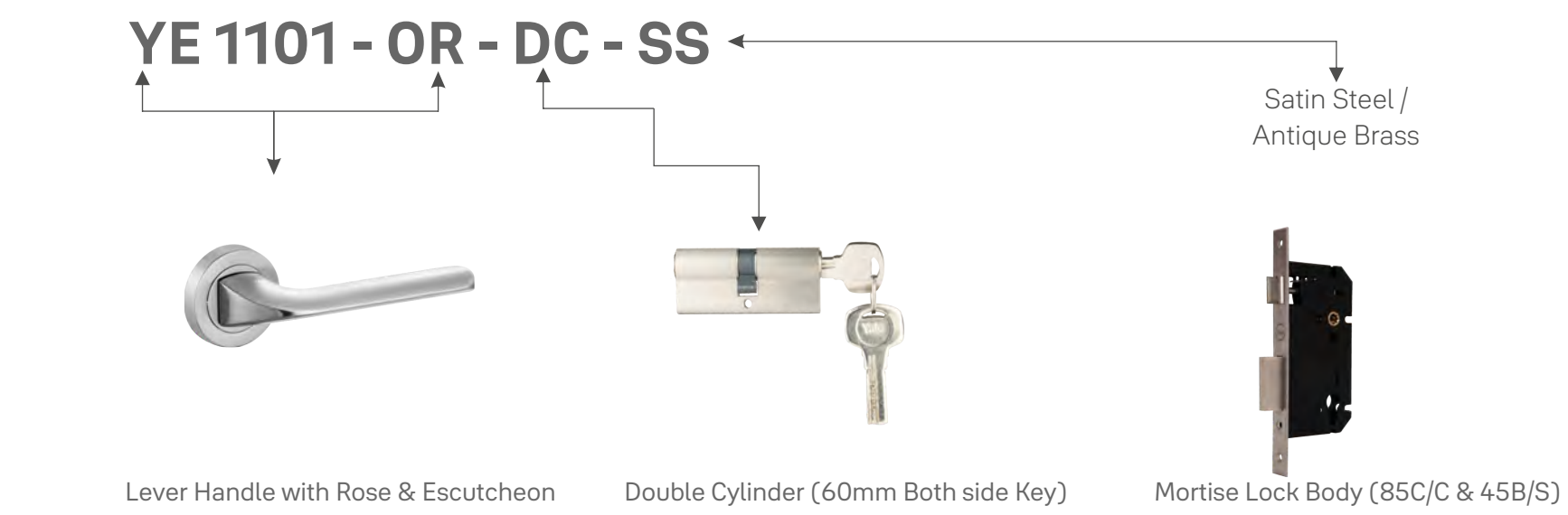
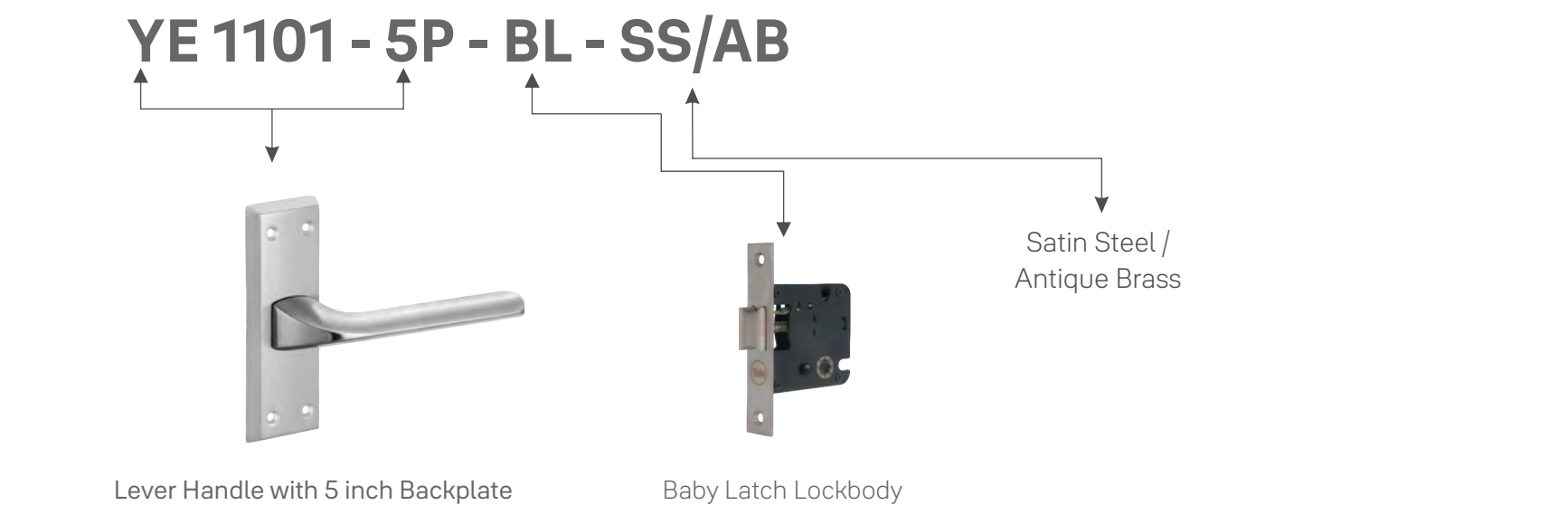
SKU's	Description	Finish
YE-1109-8P-6L-AB	Lever Handle on 8" Plate - Six Lever Mortise Body (AB)	Antique Brass
YE-1109-8P-6L-SS	Lever Handle on 8" Plate - Six Lever Mortise Body (SS)	Satin Steel
YE-1109-8P-6L-BM	Lever Handle on 8" Plate - Six Lever Mortise Body (BM)	Black Matt

Lever Handles (De-coding the combo set)

Mortise combo with lever handle



Lever Handles (De-coding the combo set)



TERMINOLOGIES : Cylinder
TT - One side thumbturn and other side key cylinder
DC - Bothside key cylinder
BK - Privacy Cylinder
BL - Baby Latch Lockbody

Door Accessories

Accessories which add convenience and strength to your door without sacrificiing style



Door Accessories

Tower Bolt

Y - TB-001

Tower Bolt

Specifications:

- Body material: Stainless Steel
- 10 Rod diameter
- Size: 4inch, 6inch, 8inch, 10inch, 12inch
- Finish: Satin Steel
- Material: SS202

Size in Inch	Description
4 X 10mm	100 x 10mm
6 X 10mm	150 x 10mm
8 X 10mm	200 x 10mm
10 X 10mm	250 x 10mm
12 X 10mm	300 x 10mm

Y - TB-002

Tower Bolt

Specifications:

- Body material: Stainless Steel
- 10 Rod diameter
- Size: 4inch, 6inch, 8inch, 10inch, 12inch
- Finish: Satin Steel
- Material: SS304

Size in Inch	Description
4 X 10mm	100 x 10mm
6 X 10mm	150 x 10mm
8 X 10mm	200 x 10mm
10 X 10mm	250 x 10mm
12 X 10mm	300 x 10mm



Y - TB-003

Tower Bolt

Specifications:

- Body material: Stainless Steel
- 9 Rod diameter
- Size: 4,6,8,10,12,15,18,24,30,36 inch
- Finish: Satin Steel
- Material: Brass

Size in Inch	Description	Size in Inch	Description
4 X 9mm	102 x 9mm	15 X 9mm	381 x 9mm
6 X 9mm	152 x 9mm	18 X 9mm	457 x 9mm
8 X 9mm	203 x 9mm	24 X 9mm	610 x 9mm
10 X 9mm	254 x 9mm	30 X 9mm	762 x 9mm
12 X 9mm	305 x 9mm	36 X 9mm	914 x 9mm

Y - TB-004

Tower Bolt Round Knob

Specifications:

- Body material: Stainless Steel
- 10 Rod diameter
- Size: 4,6,8,10,12,15,18,24,30,36 inch
- Finish: Satin Steel
- Material: Brass

Size in Inch	Description	Size in Inch	Description
4 X 10mm	102 x 10mm	15 X 10mm	381 x 10mm
6 X 10mm	152 x 10mm	18 X 10mm	457 x 10mm
8 X 10mm	203 x 10mm	24 X 10mm	610 x 10mm
10 X 10mm	254 x 10mm	30 X 10mm	762 x 10mm
12 X 10mm	305 x 10mm	36 X 10mm	914 x 10mm



Door Accessories



YDA-001
Indicator Bolt

Specifications:

- Material : Zinc
- Finishes : SS / CP / AB



YDA-002
Magnetic Door Catch

Specifications:

- Material : Zinc
- Finishes : SS / CP / AB



YDA-003
Floor Buffer

Specifications:

- Material : Zinc
- Finishes : SS / CP / AB



YDA-004
Door Stopper

Specifications:

- Material : Zinc
- Finishes : SS / CP / AB



YDA-005
Door Holder

Specifications:

- Material : Zinc
- Finishes : SS / CP / AB



YDA-006
Babt Latch

Specifications:

- Material : Zinc
- Finishes : SS / CP / AB



YDA-007
Door Silencer

Specifications:

- Material : SS202 & SS304
- Finishes : SS



YDA-008
Door Eye Slim

Specifications:

- Material : Zinc & Brass
- Finishes : SS / Gold / Brass



YDA-011
Door Stopper Square Rod

Specifications:

- Material : Zinc
- Size : 4inch, 5inch
- Finishes : SS / AB



YDA-012
Door Stopper

Specifications:

- Material : SS202
- Size : 4inch, 5inch
- Finishes : SS



YDA-013
Door Chain

Specifications:

- Material : Zinc
- Finishes : SS



YDA-014
Door Magnet

Specifications:

- Material : PVC
- Finishes : White Ivory



YDA-015
Door Buffer

Specifications:

- Material : PVC
- Finishes : White / Black

Door Accessories

Hinges

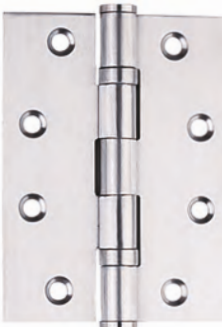


Y -RH-001
Railway Hinges (Thickness 3mm)

Specifications:

- Material : Brass

Size in Inch	Size in MM
3 x 1 x 1/8	75 x 25 x 3
4 x 1 x 1/8	100 x 25 x 3
5 x 1 x 1/8	125 x 25 x 3
6 x 1 x 1/8	150 x 25 x 3
3 x 1.1/8 x 1/8	75 x 28 x 3
4 x 1.1/8 x 1/8	100 x 28 x 3
5 x 1.1/8 x 1/8	125 x 28 x 3
6 x 1.1/8 x 1/8	150 x 28 x 3

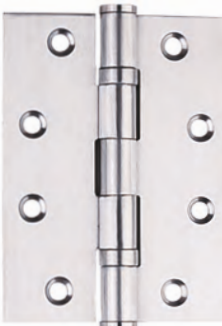


Y -BB-001
Ball Bearing Hinges

Specifications:

- Material : SS202

Size in Inch	Size in MM
3 x 2.5 x 2.5mm	75 x 63.5 x 2.5
4 x 3 x 2.5mm	100 x 75 x 2.5
5 x 3 x 2.5mm	125 x 75 x 3
4 x 3 x 3mm	100 x 75 x 3
5 x 3 x 3mm	125 x 75 x 3



Y -BB-002
Ball Bearing Hinges

Specifications:

- Material : SS304

Size in Inch	Size in MM
3 x 2.5 x 2.5mm	75 x 63.5 x 2.5
4 x 3 x 2.5mm	100 x 75 x 2.5
5 x 3 x 2.5mm	125 x 75 x 3
4 x 3 x 3mm	100 x 75 x 3
5 x 3 x 3mm	125 x 75 x 3



Y -BH-001/002/003
Bearing Hinges

Specifications:

- Material : Brass

Size in Inch	Y-BH-001	
Detail	Bearing Hinges Thickness 3mm	
Material	Brass	
Size	Size in Inch	Size in MM
	4 x 3 x 3mm	100 x 75 x 3
	5 x 3 x 3mm	125 x 75 x 3
	6 x 3 x 3mm	150 x 75 x 3

Size in Inch	Y-BH-002	
Detail	Bearing Hinges Thickness 4mm	
Material	Brass	
Size	Size in Inch	Size in MM
	4 x 3 x 4mm	100 x 75 x 4
	5 x 3 x 4mm	125 x 75 x 4
	6 x 3 x 4mm	150 x 75 x 4
	4 x 4 x 4mm	100 x 100 x 4
	5 x 4 x 4mm	125 x 100 x 4
	6 x 4 x 4mm	150 x 100 x 4

Size in Inch	Y-BH-003	
Detail	Bearing Hinges Thickness 5mm	
Material	Brass	
Size	Size in Inch	Size in MM
	5 x 3 x 5mm	125 x 75 x 5
	6 x 3 x 5mm	150 x 75 x 5
	8 x 3 x 5mm	200 x 75 x 5
	5 x 3 x 3.1/2 x 5mm	125 x 87 x 5
	6 x 3 x 3.1/2 x 5mm	150 x 87 x 5
	8 x 3 x 3.1/2 x 5mm	200 x 87 x 5
	5 x 4 x 5mm	125 x 100 x 5
	6 x 4 x 5mm	150 x 100 x 5
	8 x 4 x 5mm	200 x 100 x 5



Y -BP-001
Butt Hinges


Specifications:


- Material : SS202

Size in Inch	Size in MM
3 x 2.5 x 2.5mm	75 x 63.5 x 2.5
4 x 3 x 2.5mm	100 x 75 x 2.5
5 x 3 x 2.5mm	125 x 75 x 3
4 x 3 x 3mm	100 x 75 x 3
5 x 3 x 3mm	125 x 75 x 3



 www.yalehome.com/in

 [Yalehomeindia](#)

 [YalehomeIndia](#)

 [YaleIndia_](#)

 [YalehomeIndia](#)

 [YalehomeIndia](#)

ASSA ABLOY India PVT. LTD
Ecostar, 11th Floor, 1104/1105
Vishweshwar Nagar, Goregaon East
Mumbai - 400063
Maharashtra, India

ASSA ABLOY India PVT. LTD
Sr.No.36, Hissa No.1, Plot No.11,
Village Pisoli, Haveli Kondwa,
Pune - 411028,
Maharashtra, India

ASSA ABLOY India PVT. LTD
No. 36, 3rd Floor,
Patalamma Temple Basavanagudi,
Bangalore-560004
Karnataka, India

ASSA ABLOY India PVT. LTD
Office No. 1 & 2, Enco Working Space,
6th Floor, Enkay Tower,
B&B1 Vanijya Nikunj, Udyog Vihar,
Phase – V, Gurgaon – 122016, Haryana.

ASSA ABLOY India PVT. LTD
23-2, Old No 39-2, Cenotaph Road,
1st Lane, Near To Crown Plaza Hotel,
Opp Canara Bank, Teynampet,
Chennai 600 018

ASSA ABLOY India PVT. LTD
1st Floor, Jublie Hills, Road No 36,
Alcazar Mall, Hyderabad,
Telangana 500036



Website

